

A Multi-Stakeholder Approach to Capital Adequacy

Robert A. Painter, ACAS, MAAA
Dan Isaac, FCAS

Presented at
Enterprise Risk Management Symposium
Society of Actuaries

Chicago, IL

April 23–26, 2006

Copyright 2006 by the Society of Actuaries.

All rights reserved by the Society of Actuaries. Permission is granted to make brief excerpts for a published review. Permission is also granted to make limited numbers of copies of items in this monograph for personal, internal, classroom or other instructional use, on condition that the foregoing copyright notice is used so as to give reasonable notice of the Society's copyright. This consent for free limited copying without prior consent of the Society does not extend to making copies for general distribution, for advertising or promotional purposes, for inclusion in new collective works or for resale.

Abstract

This paper is Part 1 of a two-part submission. Part 2, “An Alternative Approach to Capital Allocation,” discusses using risk-replicating techniques that directly calculate the cost of capital. Such techniques can be used as a substitute for capital allocation.

This paper, Part 1, expands upon current capital analysis by introducing a practical approach that considers the objectives of all stakeholders of an insurance company in setting appropriate capital targets. Various stakeholders have differing objectives and therefore can define “risk” and “capital adequacy” differently; some views are more restrictive than others. In fact, some stakeholders’ capital requirements are related to the “ability of a company to thrive” rather than the “ability of a company to meet obligations.” The optimal level of capital will be different for policyholders, shareholders, management, rating agencies and regulators. These broader definitions of capital adequacy may be expressed by different key financial measures, risk thresholds and time horizons.

Economic capital approaches produce single indications of capital adequacy by applying a single solvency-based risk threshold to a short-time-horizon economic capital measure. This might not represent how all stakeholders view “risk” and “capital adequacy.” In consideration of all stakeholder objectives, the proposed “multi-stakeholder approach” therefore produces capital indications across various key financial measures, time horizons and risk tolerances. The approach results in a flexible decision-making framework for the capital management process. This framework can be applied beyond the insurance industry to any industry where there are multiple stakeholders with divergent views on capitalization targets.

In addition, the paper introduces a technique for estimating capital adequacy that is based on mapping stochastic distributions of regulatory and rating agency capital measures to observable financial rating transition matrices. This “Financial Rating Risk Replication” technique estimates capital adequacy by relating the probability of a regulatory or rating agency capital measure falling below a target “risk” threshold to the historical probability of a financial rating migrating to an equivalent “risk” level. Unlike many risk tolerance thresholds applied to economic capital measures, the risk thresholds used in this technique are based on observable information.¹

¹ Special thanks to Stephan Christiansen, Steve Sonlin, Nathan Babcock, Steve Philbrick, Dave Vining and Orfelio Maycotte for reviewing and refining this paper.

Structure of Paper

This paper will:²

1. discuss the evolution of enterprise risk management and integrated risk management;
2. discuss the evolution of capital adequacy measures from traditional leverage measures, to regulatory and rating agency formulaic measures, to economic capital measures;
3. illustrate the calculation of an economic capital measure;
4. discuss some of the weaknesses of economic capital measures;
5. review how various stakeholders of an insurance company define “capital adequacy”;
6. propose a multi-stakeholder capital adequacy analysis approach that considers the objectives of all stakeholders based on their unique key financial measures, risk tolerances and time horizons;
7. illustrate the proposed multi-stakeholder approach to capital adequacy. As part of the illustration, introduce a technique for estimating capital adequacy, the “financial rating risk replication” technique, based on mapping stochastic distributions of regulatory and rating agency capital measures to observable transition matrices;
8. compare the illustration results for the proposed multi-stakeholder approach to an economic capital approach;
9. identify the benefits of the proposed multi-stakeholder approach;
10. identify areas for further improvement and research.

² This list corresponds to the section numbering.

1. Evolution of Enterprise and Integrated Risk Management

Enterprise risk management (ERM) has made significant advances in the past 20 years. Capital and risk management and enterprise risk management have bubbled up to the forefront in not only actuarial circles but also traditional financial circles. The use of ERM is becoming prevalent enough among insurers that financial rating agencies are now including stochastic analysis in their determination of capital adequacy.

Integrated risk management has evolved from an ad hoc actuarial exercise to a process that drives senior management decision making. Implementation of some type of integrated risk management process is becoming the rule rather than the exception across the property/casualty insurance industry. This increasing acceptance of integrated risk, or holistic risk analysis, has led to decisions, such as reinsurance purchases, being based on C-level plans for integrated risk and capital management. These decisions were previously made based on partial, non-holistic, views of the organization. [Conning Research & Consulting p.56] Similarly, the analysis of capital within the property/casualty insurance industry has made significant advances in the past 20 years. We have seen the sophistication of techniques used to evaluate capitalization levels blossom just as ERM and dynamic financial analysis (DFA)³ have blossomed.

2. Evolution of Capital Adequacy Measures

2.1 Traditional Measures

Prior to the 1990s, capital adequacy measurement was relegated to the realm of comparing leverage ratios to arbitrary rules of thumb. For example, a premium-to-surplus ratio above 2.0 was considered high leverage. Similar types of rules were applied to reserve-to-surplus ratios and “risky-asset”-to-surplus ratios.

2.2 Regulatory and Rating Agency Measures

In the 1990s, capital adequacy analysis took a step towards standardization with the adoption of risk-based capital (RBC). Following soon thereafter, Standard and Poor’s and A.M. Best developed their own quantitative measures of capital adequacy, the Standard and Poor’s Capital Adequacy Ratio (S&P CAR) and the Best’s Capital

³ Refer to Appendix D for a discussion of the relationship between ERM and DFA.

Adequacy Ratio (BCAR).⁴ Generally speaking, these measures have become the common vernacular of capital adequacy measurement.

Most companies closely monitor at least one of these measures on a regular basis. Publicly traded insurers, or companies that issue substantial amounts of surplus notes, will focus on S&P CAR and BCAR. Mutual companies are more likely to focus on BCAR. State sponsored funds along with thinly capitalized companies are generally concerned with RBC.

These measures have the attractive qualities of being formula-based and fairly objective. The objective nature of these formulas makes the resulting ratios straightforward to calculate, decompose and compare. In general, all information that is needed to calculate these formulas is publicly available. Standard and Poor's and A.M. Best take these objective quantitative rating measures and overlay subjective qualitative analysis to determine their ratings.

There are also weaknesses with these capital adequacy models. For example, one of the unintended consequences of the RBC model is that if a company charges higher, more profitable, premium rates, for the same loss exposure, the RBC formula will indicate an increase in required capital. In actuality, this premium rate change should probably result in the company needing less capital to write the business. This is one of the drawbacks of standardized models: they cannot account for all of the nuances of a given company. In addition, the models generally do not account for all risks that a property/casualty insurance company faces.

Senior management is aware of these deficiencies, and is concerned with the impact of these measures on its business. Nonetheless, these measures have been adopted as the current industry standards that drive external views of a company's capital position. These are the business constraints under which senior management operates.

Regulatory and rating agency measures of capital adequacy have real and lasting consequences on businesses. Falling below RBC thresholds can attract regulatory scrutiny or require regulatory supervision. Reductions in S&P CAR ratings can have significant implications on the cost of attracting new capital. Reductions in a company's BCAR rating can significantly influence policyholders' and agents' perceptions of the company's ability to fulfill its obligations.

⁴ Refer to Appendix B for the standardized capital adequacy formulas.

2.3 Economic Capital Measures

For internal management purposes, the analysis of capital adequacy has moved beyond the standardized rating agency measures of capital adequacy to present-day economic capital measures. Economic capital measures have the following characteristics:

- customized,
- a robust view of risk and
- economic.

2.3.1 Customized

The traditional, regulatory and rating agency formulaic measures of capital adequacy are standard for all companies. The “one-size-fits-all” standardization of these formulas makes them universal, but also limits their ability to accurately predict the necessary amount of capital an insurer should hold. There are two aspects that limit their predictive ability:

- they do not explicitly model all risks that a property/casualty insurer faces;
- the risks that are modeled are calibrated based on industry data and not specific to the company being modeled.

Capital adequacy analysis has evolved, under the economic capital framework, to deal with specific risks faced by insurance companies. This customized analysis expands beyond standardized rating agency measures of capital adequacy by identifying all risks that an insurance company faces. In addition, these unique risks are calibrated and estimated based on the specific circumstances of the target company. Companies are looking beyond a standard set of risks, and are independently evaluating the unique risks that their organization faces. An example of the unique calibration is the direct feed of a company’s CAT model output into the economic capital model.

One of the strengths of the economic capital process is also its weakness. The fact that economic capital models are customized makes them non-transferable between companies. They are all uniquely calibrated and therefore are not transparent to the external world. The complex nature of economic capital models also makes them difficult to understand within an organization. Often economic capital models are

developed within the actuarial enclave. These models can be highly technical and difficult to convey. They are not transparent to others within the organization. A tremendous amount of internal education, or senior management imposition, is necessary within an organization to have a customized economic capital model accepted as part of the standard decision-making and risk management culture.

2.3.2 More Robust View of Risk

Economic capital models embrace the concepts of enterprise risk management. They attempt to quantify all of the risks, and the interactions between those risks, that a financial organization could potentially encounter. This includes operational risks, which many of the standardized regulatory and rating agency methodologies do not consider. Table 1 compares the risks that the major capital adequacy models consider.

**TABLE 1
Comparison of Risks Considered by Capital Adequacy Measures**

	Premium to Surplus Ratio	Reserve to Surplus Ratio	RBC	BCAR	S&P CAR	Economic Capital
Equity Risk			x	x	x	x
Fixed Income Default Risk			x	x	x	x
Interest Rate Risk				x		x
Reserve Risk		x	x	x	x	x
Premium Risk	x		x	x	x	x
Credit Risk			x	x	x	x
Subsidiary Risk			x	x	x	x
Business Risk			x	x	x	x
Operational & Unique Risks						x

Operational risk is a broadly defined set of risks that are difficult to identify and even more difficult to quantify. Operational risk would include the following items:

- fraud,
- compliance failure,
- systems failure,
- changes in the competitive environment,
- business reputation decline,
- management error and
- loss of key personnel.

With the advent of Sarbanes-Oxley, many of these risks are receiving much more attention. These risks, while difficult to account for, are real and have recently driven corporate giants out of business. The difficulties in quantification have caused them to be ignored in the past; it is now commonly recognized that this is unacceptable.

2.3.3 Economic

The economic basis for economic capital models is unique in terms of accounting basis, timing, calibration and risk measure. A balance sheet can also be produced on an economic value basis.

- Accounting basis: The traditional rating agency measures are based largely on information derived from publicly available statutory annual statement information. Capital, as calculated in the annual statement, is based on statutory accounting principles.

Economic views strip out the “arbitrary” accounting rules imposed by statutory and GAAP accounting. In simple terms, economic value is based on discounted cash flows. An economic balance sheet is constructed by:

- projecting forward cash flows for each asset or liability item, and then
- discounting the projected asset and liability cash flow using an appropriate risk-adjusted discount rate.⁵

From a high-level perspective, the major differences between statutory, GAAP and economic accounting for property/casualty insurance companies relate to the valuation of investment grade bonds, loss reserves and the accrual for deferred acquisition costs. Table 2 provides a comparison of treatments for these three key variables.

⁵ The appropriate risk-adjusted discount rate, especially as it applies to liabilities, is a complex, and not universally agreed-upon topic.

TABLE 2
Comparison of Accounting Bases

Financial Item	Accounting Method		
	Statutory	GAAP	Economic
Bonds	Amortized Cost	Market	Market
Loss Reserves	Undiscounted	Undiscounted	Discounted
DAC	Excluded	Included	Excluded

Unlike the well-defined statutory-accounting-based capital adequacy measures (RBC, BCAR and S&P CAR), economic capital and economic value are not well defined. It is likely that most “economic” capital adequacy models do not have identical definitions of “economic capital.”

Additionally, even though economic capital measures are a purer measure of capital adequacy, there are no practical external consequences of failing an economic capital test. RBC, BCAR and S&P CAR have real consequences if certain capital thresholds are not maintained. Economic capital calculations provide good information but have no teeth.

- Timing: Statutory and GAAP accounting rules look at capital from different perspectives. One of the primary tenets of statutory accounting is that it views the insurance operation on a liquidation basis. In contrast, GAAP accounting views an insurance operation as a going concern and strives to match revenue and expense. This leads to the question of what is the appropriate financial outlook for judging capital adequacy. Is the purpose of capital to:
 - Narrow Purpose: Solely meet the uncertainty in an insurance company’s obligations if the company closes its doors today? This is akin to a liquidation basis.
 - Broad Purpose: Meet current obligations and allow an additional cushion to support future growth in operations?

The “narrow purpose” view is fairly straightforward. Does the insurer currently have enough capital to most likely cover all obligations posted on the current balance sheet?

The “broad purpose” view is much less straightforward in terms of both theory and practice. How does one define future operations and obligations? Should a single or partial new accident year of business be

combined with the current balance sheet obligations? Should multiple new accident years of business be combined with the current obligations?

One of the deficiencies of both the standardized rating agency measures and many of the current economic capital measures is that they tend to view the capital requirement from a liquidation basis (i.e., how much capital do I need to reasonably cover my current obligations?). Some methodologies do include a recognition of a partial or single new accident year of business, but do not fully treat the insurance operation as a going concern. What is the correct time horizon to evaluate capital? The appropriate time horizon can vary between companies based on their objectives.

- **Calibration:** The end result produced by many economic capital methods is a distribution of economic capital. From this distribution a capitalization threshold is selected. This threshold is often expressed as the allowable probability of falling below an “acceptable” level of capital, for example 1 in 500, 1 in 1,000 or 5 in 10,000. Other economic capital models are based on closed-form formulas. These models are calibrated to a single, solvency-based, risk probability.

What is the appropriate threshold to select? The indicated required capital resulting from the 1-in-500 and 5-in-10,000 thresholds can be radically different. This is because the distributions of economic capital generated are very skewed. Additionally, no one practically knows what a 5-in-10,000 event looks like. Are the probabilities of foreign invasion, nuclear attack, or natural cataclysm destroying much of society greater than many of the default probabilities used for these models? We must remember dinosaurs are now extinct, and Rome only lasted 1,000 years.

- **Risk measure:** A variety of potential risk measures can be applied to the distributional result of an economic capital model. The most widely known and understood measure is value at risk (VaR). This measure, developed in the banking industry, is comparable to probability of ruin. In recent years, both actuarial and financial practitioners have also adopted a family of risk measures, called coherent risk measures, that exhibit certain attractive mathematical properties.⁶ The coherent risk measure that is currently at the forefront of risk management thought is

⁶ These properties maintain logical relationships in capital levels as component risks that combine to define a company are aggregated and disaggregated.

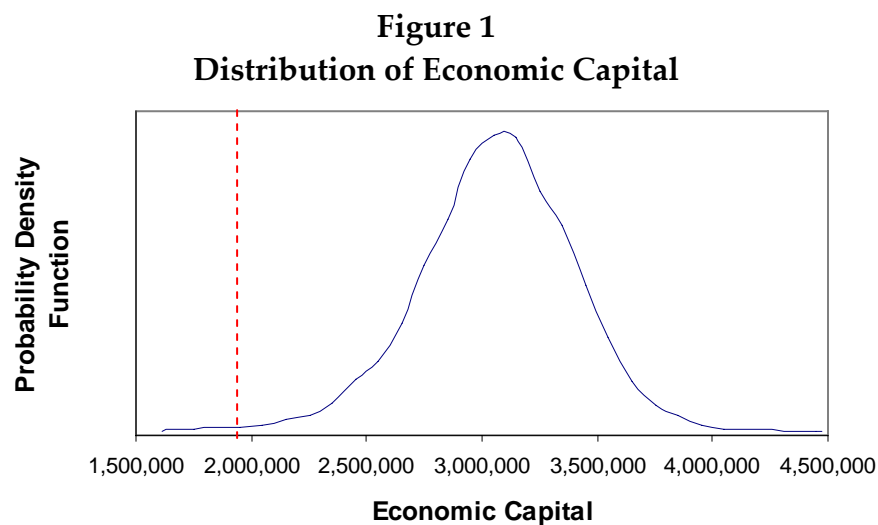
tail value at risk (TVaR)⁷. VaR and TVaR are the most common measures currently used in the evaluation of capital adequacy within economic capital models.

3. Illustration of an Economic Capital Method

This paper evaluates the capital adequacy indications of an economic capital method for a hypothetical insurance company named Falcon Insurance Company.⁸ Falcon has completed an ERM review and has developed a DFA model to represent and financially quantify all of the potential risks that were identified from the ERM process. The entire insurance company and its associated risks have been modeled within a DFA framework, resulting in consistent projections of all key economic, accounting, cash flow and rating agency measures.

The resulting illustrative economic capital calculation assumes that the current balance sheet is marked-to-market. That is, all assets are represented at market value and all liabilities are represented at discounted value. This includes the treatment of loss reserves on a discounted basis. Additionally, this economic capital calculation views the company on a partial liquidation basis where the cash flows from the existing balance sheet items, along with one new accident year of business, are considered.

A distribution of economic capital has been calculated from the DFA model. Figure 1 illustrates this distribution.



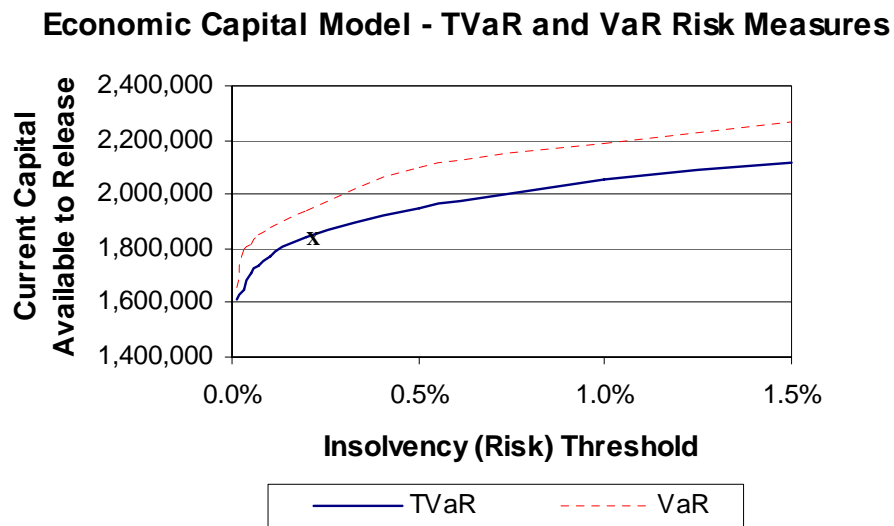
⁷ Refer to Appendix E for a discussion of TVaR.

⁸ Refer to Appendix G for a description of the hypothetical Falcon Insurance Company.

The blue solid line represents the distribution of economic capital. The red dotted line represents Falcon’s selected 1-in-500-year ($1/500 = 0.2\%$) risk threshold.⁹

Based on this distribution of economic capital, estimates of Falcon’s current capital available for release (i.e., excess economic capital) are found in Figure 2. Figure 2 applies two different risk measures, TVaR and VaR, to the distribution of economic capital; the solid line represents the TVaR results and the dotted line represents the VaR results. Additionally, estimates of current capital that is available to be released have been calculated for a variety of risk thresholds ranging from 1 in 10,000 (0.01 percent) to 150 in 10,000 (1.5 percent).

Figure 2
Economic Capital Available for Release



The intersection of the TVaR line, representing capital available to release, and Falcon’s 1-in-500 (i.e., 0.2 percent) risk threshold is marked with an “X.” This economic capital model analysis indicates that Falcon could release approximately \$1.84B in capital. One must note that the risk threshold used, as in most economic capital models, is generally expressed in terms of insolvency.

Thresholds can also be expressed in terms of bankruptcy, default or downgrade. These are potentially more restrictive expressions of risk tolerance.

⁹ The 1-in-500-year threshold is based on VaR. From this threshold a TVaR statistic can be calculated. TVaR risk thresholds cannot be directly observed. This makes calibration of a model using a TVaR risk measure very difficult.

4. Weaknesses of Economic Capital Models

Economic capital models have improved the rigor of capital adequacy analysis. Economic capital models have both strengths and weaknesses. Many of the weaknesses, such as lack of transparency, are unavoidable given the rigorous and robust nature of these models. In addition, many economic capital models have a few key weaknesses that limit their practical use. These weaknesses are:

- economic capital models produce a single measure of required capital,
- economic measures have no external consequences,
- economic capital models have a single fixed time horizon,
- economic capital models have a single risk tolerance and
- selection of risk thresholds is often arbitrary and there is significant parameter risk in the extreme tail.

4.1 Single Financial Measure of Required Capital

Economic capital models only produce one view of the correct level of capital. The single estimate of required capital is a function of a single view of risk and risk tolerance. This myopic view of the world is a function of model design.¹⁰

4.2 No External Consequences

Economic capital models take a customized view of the insurer's need for capital, but, unlike the standardized regulatory and rating agency models, have no real consequences for the insurer. The results from the risk-based capital model could result in forced receivership of the company. The results of the rating agency models could lead to downgrade. The results of the economic capital model are currently only used to provide information to the company.

4.3 Inflexible in Terms of Time Horizon

Most economic capital measures are often primarily based on current balance sheet risks and a partial new accident year of risk exposure. Thus they are not designed to view the business on a multi-year/going-concern basis.

¹⁰ These model designs are often based on inflexible, closed-form equations that have limited calibrations.

Risk can look very different over time. A risk that can dominate the risk landscape over a short time horizon can be more benign over a longer time horizon. For example, small unanticipated changes in medical inflation might require only a small portion of the total required capital over a short time horizon. Over a longer time horizon, the impact of unanticipated changes in medical inflation will compound while other risks, such as catastrophe frequency, will diversify. Therefore, a single economic capital metric is a current-point-in-time measure that does not consider how risks interact over many different time horizons. It views risk over a single time horizon. It is important to understand how these risks interact and aggregate over different time horizons to understand the appropriate level of capital to hold.

These models are generally calibrated to a single time horizon using a specified correlation matrix that is also based on a single time horizon. They often model various risks at a high level and then aggregate these risks using the correlation matrix. This is in contrast to many dynamic financial analysis models that build the interactions of various key financial variables from the ground up. The modeling of these fundamental financial variables in an integrated, multi-year framework does not rely on a static correlation matrix. The integrated dependent relationships drive the correlations between different risks. This construction allows risk, and the interactions of a variety of risks, to be represented not just at a single time horizon, but at a variety of time horizons.

4.4 Inflexible in Terms of Risk Tolerance

A risk threshold must be selected to determine the required amount of economic capital. This threshold is based on a company's risk tolerance. The more tolerance that a company has to insolvency risk, the lower the threshold. The less tolerance that a company has to insolvency risk, the higher the threshold. Many economic capital models only allow a single threshold to be selected due to the calibrated nature of these models. The model must be rebuilt if a different risk threshold is required.

Most companies are interested in looking at a range of reasonable outcomes based on a variety of risk thresholds. This is partially because most risk thresholds are so extreme (i.e., 1 in 500 or 1 in 1,000) that they do not translate into levels of risk that are commonly experienced. Therefore, senior management may need to calibrate their risk tolerance by examining financial implications at various thresholds. The inflexibility of many economic capital models will not allow this sensitivity test.

4.5 Risk Thresholds are Arbitrary and Parameter Risk in the Extreme Tail is Significant

The ability to sensitivity test is imperative. There are no hard rules as to the “correct” level of capital. It is dependent on the issue being addressed and the level of risk the company is willing to take. Practically, the establishment of these thresholds is based on very little empirical information and is fairly arbitrary. For example, there is no observable capital threshold for setting the TVaR result of the economic capital model to a certain percentage. The skewness and uncertainty (i.e., parameter risk) of the underlying economic capital projections exacerbates this problem.

The extreme tail of the economic capital distributions is highly skewed and uncertain. Even if the risk threshold can be perfectly defined, the volatility of the underlying projections will likely make it difficult to pinpoint a precise capital level. This lack of ability to specify the correct parameters can be partially remedied through sensitivity testing.

5. “Capital Adequacy” Has Different Meanings for Different Stakeholders

Numerous different stakeholders have an interest in property/casualty insurance companies. These stakeholders vary depending on the type of insurance company and the specific circumstances surrounding that company. This can be illustrated by comparing the stakeholders of a mutual insurance company with those of a publicly traded stock insurance company. The stock insurance company must satisfy the needs of its shareholders; a mutual insurance company is not required to satisfy such a group.

The objectives of the various stakeholders, regardless of the company structure, are not always identical. This difference in objectives manifests itself in their definitions of “capital adequacy” and their opinions of the appropriate level of capital for a company to hold. The definition of “adequacy” for many stakeholders is broader than the traditional definition based on the amount of capital to hold to maintain solvency. Adequacy, in this broader context, is the level of capital needed to meet that stakeholders’ particular objectives. The following are general views of “capital adequacy” for different stakeholders:

- policyholders,
- regulators,
- debtholders,

- rating agencies,
- shareholders and equity analysts and
- company management.

5.1 Policyholders

Policyholders want capitalization levels to be set such that they are fully protected in the event of a loss. The policyholder is less concerned with the efficient use of capital or the costs of overcapitalization.¹¹

5.2 Regulators

The regulator's primary concern is the policyholder. Regulators desire for rates to be affordable and for insurers to be able to fully pay claims. The primary purpose for capital, from a regulator's perspective, is to assure insurance obligations are fully paid to policyholders. Risk-based capital standards are measures of minimal solvency and the fundamental ability to pay claims. As such, risk-based capital standards represent the minimum level of capital required to maintain operations. From a regulator's perspective the more capital an insurer has, the better.

5.3 Debtholders

Debtholders are best off if capital levels are maximized. More capital equates to a lower chance of debt default. Additionally, increases in capitalization levels through stock issuance could potentially lead to upgrades from rating agencies and the appreciation of held bonds.

5.4 Rating Agencies

Rating agencies, like regulators, are concerned with the ability of the insurer to meet its obligations. A.M. Best is primarily concerned with the ability of an insurer to pay claims to policyholders. Standard and Poor's and Moody's, not to the exclusion of policyholder obligations, also concentrate on the additional ability of insurers to repay debt obligations. Generally, from a rating agency perspective, more capital is the favored position.

¹¹ An exception would be if the company charges high premium rates to support capital growth and the policyholder has limited alternative choices for coverage.

However, rating agencies go beyond analyzing the current level of capitalization when establishing a rating. They also examine forward-looking profitability and capital levels of the company. Rating agencies must take a longer term view of the operation given that surplus note obligations will be defeased over a long time period, up to 30 years, and do not have to be accounted for as a liability on the statutory balance sheet. This is in contrast to policyholder obligations, loss reserves, for which an undiscounted liability must be immediately established on the statutory balance sheet.

5.5 Shareholders and Equity Analysts

The shareholders have still another view of capital adequacy. The shareholders objective is to maximize their return on capital while maintaining enough capital to absorb unexpected, non-diversifiable risk. In addition, shareholders want enough capital to support growth of new and existing operations that will meet their return-on-capital requirements.

Shareholders thus have multiple objectives that pull the amount of required capital in opposing directions. That is, some objectives are satisfied with higher capital levels; some objectives are satisfied with lower capital levels.

- **Higher Capital:** Shareholders want the company to hold enough capital to maintain the operation of the company through unexpected shocks. This is generally aligned with the objectives of the policyholders and the debtholders. Equity capital from shareholders is put at risk ahead of invested capital from debtholders to support the obligations of any company. If the company defaults on its debt then the shareholders have already lost their capital investment in the company. Protecting the shareholders' interests also protects the debtholders' interests.
- **Lower Capital:** Unlike the policyholders and the debtholders, the shareholders are also concerned about inefficient use of capital and overcapitalization. Even though an operation might have a solid return on revenue,¹² the operation might, due to overcapitalization, have a sub-par return on capital. The lower the level of capital in the return-on-capital formula, the higher the return on capital.

¹² Return on revenue can be based on the operating ratio for property/casualty insurance companies. The operating ratio is defined as $((\text{net loss\&LAE incurred} - \text{investment income excluding realized capital gains}) / \text{net earned premium}) + (\text{underwriting expenses} / \text{net written premium})$.

5.6 Company Management

Company management, along with the board of directors, weighs all of these different opinions of “adequate” capitalization in setting an appropriate capital target. Company management is often incented through bonus targets and stock ownership/option plans to operate the company in line with the best interest of the shareholders or other stakeholders. However, these incentive plans are not perfect and sometimes management might have their own divergent objectives that could impact the capitalization decision of the company.

Company management has an incentive to keep the company open. A significant objective for company management is continued gainful employment. However, keeping the company in full operation might be less important to other stakeholders. For example, policyholders will easily find other companies from which to purchase insurance. Similarly, shareholders might have other, equally attractive, investment opportunities in which to redeploy their capital if a company goes into runoff and begins to release capital. As a result, one could argue that management will desire a higher level of capital than shareholders to ensure the ongoing operations of the business. This would encompass holding additional capital to avoid not only insolvency, but also a ratings downgrade that might force the company into runoff.

The various stakeholders of an insurance company have many different views of the use, and appropriate levels, of capital. Some stakeholders, like the regulators, are less restrictive as they require a minimal level of capital. Other stakeholders, such as the debtholders, are more restrictive; they want to maximize their chance of principal repayment.

5.7 All Stakeholder Needs Should be Considered in Setting a Capital Target

Stakeholders have differing approaches in evaluating the “appropriate” and “adequate” level of capital for an insurance company. Stakeholders are concerned with different:

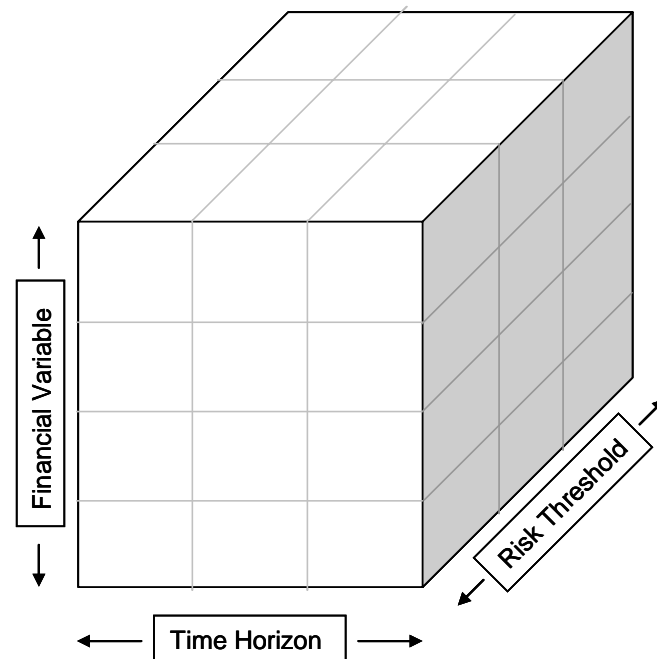
- financial variables,
- time horizons and
- risk thresholds and tolerances.

As a result, the capital adequacy process cannot be one-size-fits-all. The capital adequacy process must be flexible and be able to align the appropriate level of capital with the needs of the primary stakeholders of the organization.

6. Multi-Stakeholder Approach to Capital Adequacy

This paper proposes adopting a multi-stakeholder approach to determining the “appropriate” level of capitalization for an organization, based on the objectives of its stakeholders. This approach looks at all relevant financial measures over various time horizons and risk tolerances. A required amount of capital can be calculated for all combinations of each of these three dimensions. Figure 3 provides a graphical representation of this framework.

Figure 3
Multi-Objective Decision-Making Framework



Each of the individual “cubes” within the larger box represents an independent analysis of capital adequacy based on the financial variables, time horizon and risk threshold defined by the objectives of the stakeholders.¹³ Each individual cube can be thought to contain an estimate of required capital¹⁴ based on a single objective. The economic capital model result would represent only one of the individual cubes.

¹³ Refer to Appendix F for a description of the characteristics a model requires to support this multi-objective approach to capital adequacy.

¹⁴ Similarly the analysis can produce results in terms of capital available for release instead of required capital.

The company can then rank all of the various objectives of its stakeholders. These ranked objectives can be overlaid onto the quantitative analysis of capital adequacy represented by the box in Figure 3. Based on this information, the company can assess the restrictiveness of its objectives on the appropriate level of capital for the organization. This analysis would allow management to select a single capital “adequacy” target.

This is the way insurance organizations are practically managed. There are generally multiple objectives and constraints surrounding every strategic decision. These objectives are often not aligned, and can be conflicting. That is, fulfilling one objective might result in not fulfilling another objective. The risks and rewards of each of the objectives must be weighed along with the relative importance of each of the objectives. In effect, any strategic decision, including decisions such as strategic asset allocation, can be analyzed in this multi-objective framework.

An additional benefit of the multi-objective framework, when applied to capital adequacy, is that it allows management to get a sense of the sensitivity of the required capital results by looking at the indicated levels of capital for various risk thresholds. This framework allows a reasonable range of answers to be analyzed before selecting a single capital target. Understanding the sensitivity of the results to the assumptions, along with the reasonable range, is as important as the resulting single point estimate of required capital.

6.1 Dimension #1: Financial Variable

The varying objectives of a company require prospective projections of multiple key financial variables in order to set an appropriate capital target. Understanding the implications of varying levels of capitalization on short-term and long-term financial results is imperative. The following discusses some of the common financial variables surrounding capital analysis.

6.1.1 Return on Capital

Shareholders are interested in the efficient use of capital. Overcapitalization could lead to dilution of return. The shareholders’ goal is to consistently experience returns on capital in excess of their cost of capital. A capital analysis should quantify the probability of exceeding the cost of capital for a variety of capitalization levels.

6.1.2 Rating Agency Standardized Measures

Agency ratings are the prime capital consideration for many well-capitalized insurance companies. Mutual insurance companies often concentrate on BCAR. Insurance companies that actively issue surplus notes often concentrate on S&P CAR. In practice, companies set capital targets to maintain a particular rating. The rating that is assigned to them has real financial consequences on their business. It is important to prospectively understand the probability of future ratings downgrade or upgrade before making a capitalization decision.

6.1.3 Regulatory Measures

The risk-based capital process is the primary regulatory measure of capital adequacy. Understanding the probability of falling below the authorized control level or mandatory control level thresholds should be part of any standard capital adequacy analysis.

6.1.4 Economic Capital Measures

The economic capital measure provides important insight in the unique risks and capital needs of an organization. This measure can be considered a leading indicator for the standardized measures of capital adequacy.

6.2 Dimension #2: Time Horizon

Time horizon is one of the most important concepts in risk management.

6.2.1 Risks Interact Differently over Time

One of the primary tenets of investment risk management is understanding the investor's time horizon. The risk characteristics of various investment classes change over different time (i.e., investment) horizons. For example, common stock risk diversifies differently over time than does long-term bond risk. This concept is also true for non-investment-related risks. Catastrophe risk compares very differently to an exposure like workers' compensation medical payments on a one-year basis versus a multi-year basis. The key is that risks correlate and diversify differently over various time horizons. These interactions and dependencies need to be understood to set an appropriate capital level to absorb the aggregate uncertainty of the insurance company.

6.2.2 Current Capital Supports Future Growth

Additionally, using a multi-year approach that considers new business is important because it treats the operation as a going concern. The level of capital should be sufficient to support growth, or contraction, of the operation. Not all growth is the same. Growing an extremely profitable segment of existing business might require very little additional capital because of strong retained earnings. Expanding into a new segment of business and cutting price to gain market share would most likely require more risk capital.

6.2.3 Capital is a Fair-Weather Friend: Elusive When You Need it the Most

Capital is not always readily available.¹⁵ For example, publicly traded companies might be able to raise capital more quickly and efficiently than mutual insurance companies or state-run insurance facilities. Businesses cannot always easily raise additional capital once an adverse event occurs. The capital market can evaporate, or the cost of raising capital can become prohibitive.

The company has to weigh its prospects for raising capital in the future, in combination with its potential short-term and long-term capital requirements. This cannot be accomplished without a multi-year view of the operation. For example, comparing the probabilities of falling into a company action level risk-based capital position in the next year versus over the next three years is important information for setting the current capital target. These two time-horizon measures will most likely yield different insolvency potentials. Managing capital in the short term could resolve potential long-term problems.

6.3 Dimension #3: Risk Threshold

From a practical perspective, quantifying the extreme tail event outcome and risk tolerances are educated guesses. With limited knowledge of both current risks and future potential risks, no one knows exactly what selecting a 1-in-1,000 risk tolerance (i.e., risk threshold) means. Was Hurricane Katrina a 1-in-20-year event or a 1-in-100-year event? The best we can do is make a risk threshold selection, and sensitivity test that selection. An advantage of analyzing capital adequacy within a DFA framework is that it easily allows one to sensitivity test various assumptions and risk thresholds. Sensitivity testing can also provide insight as to the key drivers of a company's capital needs.

¹⁵ In addition, capital is not always easy to shed. Mutuals and state funds that do not have dividend programs do not have a flexible outlet to manage overcapitalization situations.

6.3.1 Failure to Meet Obligations versus “Failure-to-Thrive”

Stakeholders do not all have the same risk tolerances and risk thresholds. Two different stakeholders may view risk differently, even if they are both concentrating on the same risk measure. Some stakeholders’ risk tolerances can be represented in terms of insolvency. Policyholders are adversely affected if the company becomes insolvent and cannot meet its claim obligations. Other stakeholders’ risk tolerances can be represented in terms of a “failure-to-thrive.” Company management, and the potential viability of the business, is adversely affected if the company is downgraded below a given rating. This failure-to-thrive risk threshold is potentially more constraining than the policyholders’ insolvency threshold.

A common example of this is the ratings downgrade “death spiral.” Under this scenario an A-rated¹⁶ (“Excellent”) company is downgraded one notch to B++ (“Very Good”). Both ratings are considered secure. Under both ratings, the rating agency considers it a high probability that the policyholders will be made whole. The implications of a one-notch downgrade to policyholders are minor as the company will most likely meet its obligations.

The practical, real world, impact of this occurrence can have severe consequences. This downgrade can be the beginning of the “death spiral” for many insurance companies. Company management seeks to avoid this “death spiral” at all costs. The downgrade will put the company at a competitive disadvantage, as many agents and brokers will place business only with A-rated companies. Premium volume, along with the quality of business being put on the books, will diminish. This will cause the company to “fail-to-thrive” and can potentially lead to run-off.

In this example, management’s capital adequacy goals are tied to risk tolerances that are more constraining than the extreme tail events that will lead to insolvency. The probability of downgrade is seemingly much higher than the probability of insolvency. Management’s goals are tied to the often-over-looked, non-extreme part of the distribution. The risk thresholds for company management and policyholders can be very different. The economic capital model will often focus on the insolvency event, which has a fixed risk threshold. However, various risk thresholds need to be understood to set the appropriate level of capital.

¹⁶ Referring to A.M. Best ratings.

7. Illustration of the Multi-Objective Approach Using the “Financial Rating Risk Replication” Technique

Falcon Insurance Company has decided to take the next step beyond economic capital modeling and explore the implications of various capital levels on other key business objectives. Falcon is currently an A-rated company, by S&P, and has stated objectives of holding enough capital to avoid default and to avoid a one-notch downgrade by S&P. It wants to analyze these objectives over its four-year planning horizon.

To quantify these objectives Falcon has selected the RBC Ratio and S&P CAR as its financial measures. The RBC Ratio will be used to analyze Falcon’s risk threshold of “default.” The S&P CAR will be used to analyze the one-notch downgrade risk threshold. In this example, the first and third dimensions of the multi-objective framework have been collapsed (financial variable and risk threshold) to aid in comparison. Falcon could also use the RBC Ratio and S&P CAR to analyze other risk thresholds, such as two-notch downgrade or insolvency.¹⁷

7.1 The “Financial Rating Risk Replication” Technique

Specified thresholds stated in the risk-based capital process and the Standard & Poor’s capital adequacy ratio process have been mapped to company financial ratings. Table 3 displays the association of the stated RBC Ratio and S&P CAR results to company financial ratings.

TABLE 3
Risk Threshold to Company Rating Mapping¹⁸

Financial Variable	Risk Threshold - Name	Risk Threshold - Quantity	Company Rating
RBC Ratio	Default	100% of Authorized Control Level	D or below
S&P CAR	One-Notch Downgrade	125%	BBB or below

For example, RBC Ratios below a 100 percent of authorized control capital level are considered a default position.¹⁹ This position can be mapped to a company rating of D or below. Likewise, the S&P CAR falling below 125 percent is an indication of a potential BBB rating.

¹⁷ Insolvency is defined differently from default. A company might default on its debt obligations but still have the ability to fulfill its policyholder obligations and still have positive capital. The company is still technically solvent.

¹⁸ Refer to Appendix B.

¹⁹ In an authorized control level situation the regulator has authority to take control of the company. Under this situation, the regulator’s primary goal, making policyholders whole, will become the primary objective of the organization. All debt payments will be placed behind policyholder payments. Refer to Appendix B, Table B2.

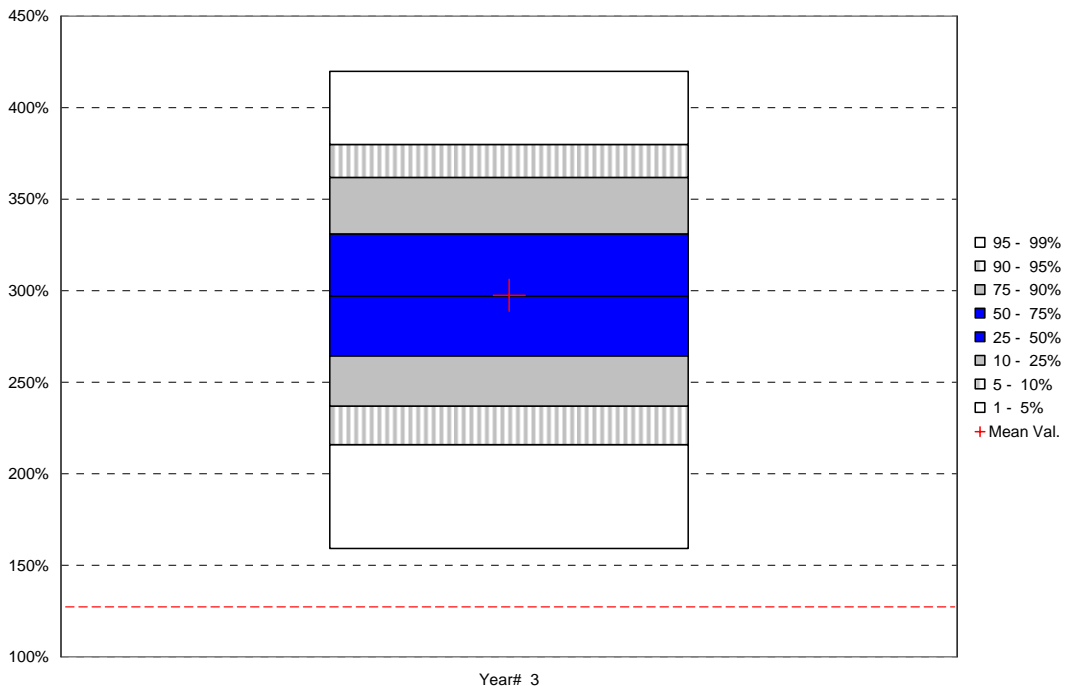
Capital adequacy is calculated for the two financial variable/risk threshold combinations, for each of the four years. This will produce eight separate estimates of required capital and also the implied amount of capital that Falcon has available to release.

There are four steps in calculating the amount of capital available for release for the “financial rating risk replication” technique. This technique is illustrated below for one of Falcon’s eight objectives, S&P CAR one-notch downgrade in Year 3.

Step 1: Calculate a Distribution of Results for Each Financial Variable, Risk Threshold and Time Horizon Combination.

Falcon’s DFA/ERM analysis has produced distributions of the RBC Ratio and S&P CAR for each of the four years of its planning horizon. For example, Figure 4 displays the distribution of the S&P CAR in Year 3.

Figure 4
Distribution of Year 3 S&P CAR
Distribution of S&P Capital Adequacy Ratio - Year 3



Step 2: Calculate the Probability of Each of the Distributions Falling Below the Risk Threshold Quantity.

Each of these distributions provides a probability of falling below the fixed risk threshold quantity. The risk threshold for the S&P CAR one-notch downgrade risk tolerance is 125 percent.²⁰ This risk threshold quantity is represented by the red dotted line in Figure 4. The probability of falling below the 125 percent threshold in Year 3 is less than 1 percent.

Step 3: Calculate the Probability of the Company Rating Transitioning from the Current Rating to a Rating at or Below the Mapped Company Rating Threshold.

Financial rating transition matrices are used to determine this information. These rating transition matrices track the number of companies that begin with a given rating and are upgraded, downgraded or remain at their current rating over a given time horizon. From this information the probabilities of moving from one rating to another rating, over a given time horizon, can be calculated. Continuing the example, the probability of being downgraded from A to BBB or lower within three years, based on the transition matrices in Appendix A, is approximately 17 percent.

Step 4: Adjust Current Capital Such That the Probability Calculated in Step 2 Equals the Probability in Step 3.

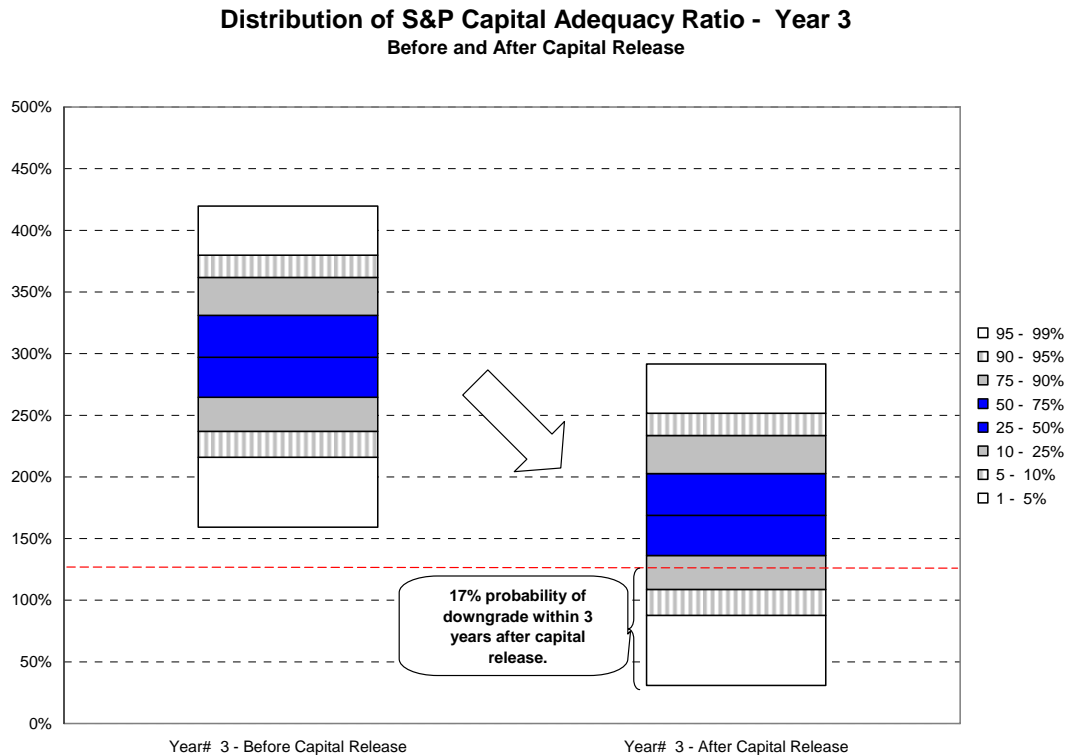
Iteratively adjust the initial capital level, and reproject the financial distribution, such that the probability of falling below the risk threshold, calculated in Step 2, is equal to the probability calculated in Step 3. The result of this technique is to align Falcon's risk structure with the risk structure observed in the greater world. This risk-replicating technique can be applied to any financial measure that can be mapped into a company rating.

Figure 5 provides an example of the final step of this process. Reducing Falcon's current capital by \$0.973B results in a 17 percent chance that the Year 3 S&P CAR will be below the 125 percent threshold. This acts to align Falcon's downside transition risk with the actual risk observed in the larger economy. An A-rated

²⁰ Refer to Appendix B for rating descriptions and thresholds.

company can be defined as having a 17 percent chance of at least a one-notch downgrade over a three-year period.²¹

Figure 5
Distribution of Year 3 S&P CAR— Before and After Capital Release



A significant advantage of this technique is that the transition matrix probabilities, unlike the economic capital TVaR risk thresholds, are observable and understandable.

The \$0.973B capital release indication is a single element of the multi-objective framework.²² This process is repeated for all financial variable, risk threshold and time horizon combinations. Table 4 displays the resulting indications of capital available to release for Falcon’s other objectives.

²¹ Falcon’s management might want to be more conservative than the average A-rated company. As a result, they might choose to be capitalized at the upper end of the A-rating range, which would have a 5 percent to 10 percent chance of transitioning to a BBB rating within three years.

²² Refer to Appendix C for simplified calculations.

TABLE 4
Capital Available to Release (\$000): Multi-Objective Framework

Financial Variable (Risk Threshold)	Time Horizon			
	Year 1	Year 2	Year 3	Year 4
RBC Ratio (Default)	1,392,603	584,535	(35,302)	(353,835)
S&P CAR (Downgrade)	793,956	894,850	973,183	955,638

Table 4 provides important information to Falcon’s management team. In the short term, Years 1 and 2, Falcon is seemingly overcapitalized (i.e., the capital available for release is positive). However, the compounding of risk and uncertainty over Years 1 and 2, or the introduction of new risks in Year 3, has reversed the indicated amount of available capital for release for the RBC Ratio default measure in Year 3. The Year 3 RBC Ratio result indicates that Falcon should currently hold an additional \$0.035B in capital.

Based on this quantitative information Falcon management must overlay its subjective analysis of:

- the relative importance of these objectives and
- the ability of Falcon to raise or release capital.

If all of the eight objectives are given equal weight in the minds of Falcon management then the most constraining²³ result will be the capital indication. In this case, the Year 4 RBC Ratio result is the most constraining. This indicates raising \$0.353B of capital. However, often the financial variable objectives of a company will not be given equal weighting. Additionally, the weighting placed on the results in the earlier years, Year 1 and 2, will be given more weight than the results in the later years, Years 3 and 4.

If the “S&P CAR (Downgrade)” objective is of primary concern then Falcon management would de-emphasize the RBC Ratio results and potentially release capital. If the “RBC Ratio (Default)” objective is primary, then Falcon management must decide not only how much capital they should raise, but also when they should attempt to raise the capital.

²³ Notice that the S&P CAR indications in Table 4 increase from Years 1 to 3 and then decrease in Year 4. This inversion illustrates that intermediate time periods need to be evaluated. The time horizon increments used in the analysis should match a reasonable time needed to make capital decisions.

If Falcon has easy access to the capital markets, they might delay raising capital to see how their operations progress over the next time period and then re-evaluate the situation. If they have limited access to capital, they might take quicker action to raise funds. Additionally, Falcon might take quicker action if any anticipated short-term changes in their business would limit the availability, or increase the cost, of capital.

8. Result Comparison: Economic Capital Method and Multi-Objective Framework Approach

The economic capital model analysis indicates that Falcon has the ability to release approximately \$1.84B in capital (see Figure 2). This is based on the selection of a 1-in-500-year chance of insolvency. If Falcon applied a 5-in-10,000-year chance of insolvency, the indicated capital release would be \$1.71B.

These results are very different from the results derived from the RBC Ratio default analysis. Though the Year 1 RBC Ratio analysis indicates a capital release of \$1.39B (see Table 4), the indicated releases decline in the following years. In fact, the Year 4 RBC Ratio indication is to raise additional capital.

This highlights the importance of viewing capital “adequacy” from a broader perspective. The economic capital measures indicate the ability to release capital. The broader, multi-objective view indicates that Falcon has the ability to release capital on a short term basis; however, they might need to eventually raise additional capital. Relying solely on the economic capital measure would not have given you complete information necessary to make the appropriate capital decision.

9. Benefits of the Proposed Approach—Revisited

The following are the benefits of the proposed approach over the current state-of-the-art approach.

Incorporates Unique Objectives

This process allows the unique objectives of all stakeholders to be incorporated into the analysis.

Aligned with Real-World Decision-Making Processes

The multi-objective framework approach is aligned with the practical process that management teams use to evaluate strategic decisions. The company's objectives are listed and ranked, the risk and reward of each objective is evaluated and quantified, and the best decision is made based on the preponderance of available information.

Produces Multiple Estimates of Capital Adequacy

The proposed approach produces more than one point estimate of required capital. The objectives can be tied to key financial variables that are understood and observed. An estimate of required capital is developed for each objective.

Goes Beyond Solvency Analysis

Solvency analysis is a component of capital adequacy analysis. Current economic capital analysis is a function of solvency. A company's capital goals might consider a more restrictive basis such as default or downgrade.

Consistent Evaluation

Using a DFA platform allows for consistent evaluation of all measures, whether real world or theoretical.

Multiple Risk Thresholds and Sensitivity Testing

A variety of risk tolerances can be easily evaluated. This is important because not all stakeholders have the same risk tolerance thresholds. Additionally, results of the analysis can be sensitivity tested by using a variety of risk thresholds.

Multi-Year Time Horizon

The business can be viewed over a multi-year time horizon. This going-concern view allows management to plan actions for future needs.

Appropriately Represents Risk Diversification and Aggregation over Time

Risk is partially a function of time horizon. Risk factors interact differently over time. Additionally, individual risks diversify and aggregate at different speeds over time. These interactions need to be specified correctly to have a useful platform for capital adequacy analysis.

Risk Thresholds Calibrated to Observable Information

Model calibration is tied to observable and understandable information.

10. Areas for Future Research

The following are areas for further improvement and research.

Management Intervention

The financial results included in the illustrations have assumed that company management does not take intervening steps to change the business from their original plan over the four-year horizon. An additional step of this process is to overlay dynamic feedback of management's reactions to changes in the business. This would include revising their business plan and raising or shedding capital over the interim time periods.

Multi-Year Transition Matrices

Appendix A shows the transition matrices used in this illustration. The two-year, three-year and four-year matrices are developed by independently multiplying the one-year matrix. Ideally the two-year, three-year and four-year matrices would be developed separately based on tracking companies over two-year, three-year and four-year time horizons. This data is becoming more available.

The assumption of independent matrix multiplication could potentially understate the speed at which a company would potentially default or go insolvent.

Rating Standards Shifts

Rating agencies change their outlooks on the attributes a company should exhibit to earn a given rating. For example, the number of companies currently assigned a BBB rating is greater than previously experienced. The fundamentals of these companies probably have not radically changed. However, the standards that are imposed on them to achieve a certain rating have changed.

Appendix A: Transition Matrices

Transition matrices show the historical financial rating movements, both upgrades and downgrades, of companies over a fixed period of time. Table A1 displays the 1-year transition matrix produced by Standard and Poor's. For example, historically, 7.92 percent of companies that are AAA-rated have been downgraded to a AA rating over a single year. Tables A2, A3 and A4 are a function of Table A1. The two-year, three-year and four-year transition matrices are independent matrix multiplications of the one-year matrix. For example, the three-year matrix is the one-year matrix multiplied by itself three times.

The shaded areas in the transition matrices indicate the information that was used for the Falcon Insurance Company illustration. The combined (i.e., summed) light and dark shaded region, for each matrix, represents the probability of downgrade from "A" to "BBB" or lower over a given one-year, two-year, three-year or four-year time horizon. The dark shaded region represents the probability of falling from an "A" rating to a "D" rating over a similar time horizon. Table A5 displays these transition probabilities for the eight different time horizon and risk tolerance objectives used in the Falcon Insurance Company illustration.

TABLE A1
Standard and Poor's 1-Year Transition Matrix

From Rating	To Rating							
	AAA	AA	A	BBB	BB	B	CCC	D
AAA	91.42%	7.92%	0.51%	0.09%	0.06%	0.00%	0.00%	0.00%
AA	0.61%	90.68%	7.91%	0.61%	0.05%	0.11%	0.02%	0.01%
A	0.05%	1.99%	91.43%	5.86%	0.43%	0.16%	0.03%	0.05%
BBB	0.02%	0.17%	4.08%	89.94%	4.55%	0.79%	0.18%	0.27%
BB	0.04%	0.05%	0.27%	5.79%	83.61%	8.06%	0.99%	1.19%
B	0.00%	0.06%	0.22%	0.35%	6.21%	82.49%	4.76%	5.91%
CCC	0.00%	0.00%	0.32%	0.48%	1.45%	12.63%	54.71%	30.41%
D	0.00%	0.00%	0.00%	0.00%	0.00%	0.00%	0.00%	100.00%

TABLE A2
2-Year Transition Matrix (Calculated Based on 1-Year S&P Matrix)

From Rating	To Rating							
	AAA	AA	A	BBB	BB	B	CCC	D
AAA	83.62%	14.43%	1.56%	0.24%	0.12%	0.02%	0.00%	0.00%
AA	1.11%	82.44%	14.43%	1.57%	0.16%	0.21%	0.04%	0.04%
A	0.10%	3.64%	83.99%	10.67%	1.03%	0.37%	0.07%	0.14%
BBB	0.04%	0.39%	7.43%	81.40%	7.97%	1.76%	0.34%	0.67%
BB	0.07%	0.11%	0.73%	10.10%	70.69%	13.56%	1.76%	2.98%
B	0.00%	0.11%	0.43%	1.00%	10.40%	69.15%	6.59%	12.31%
CCC	0.00%	0.02%	0.52%	0.84%	2.81%	17.45%	30.55%	47.81%
D	0.00%	0.00%	0.00%	0.00%	0.00%	0.00%	0.00%	100.00%

TABLE A3
3-Year Transition Matrix (Calculated Based on 1-Year S&P Matrix)

From Rating	To Rating							
	AAA	AA	A	BBB	BB	B	CCC	D
AAA	76.54%	19.74%	3.01%	0.48%	0.17%	0.04%	0.01%	0.01%
AA	1.53%	75.13%	19.79%	2.77%	0.32%	0.32%	0.06%	0.08%
A	0.16%	5.00%	77.52%	14.60%	1.73%	0.62%	0.11%	0.26%
BBB	0.06%	0.65%	10.17%	74.12%	10.51%	2.79%	0.50%	1.20%
BB	0.10%	0.18%	1.32%	13.27%	60.43%	17.19%	2.33%	5.18%
B	0.01%	0.16%	0.65%	1.80%	13.13%	58.72%	7.00%	18.53%
CCC	0.00%	0.04%	0.65%	1.16%	3.92%	18.49%	17.57%	58.17%
D	0.00%	0.00%	0.00%	0.00%	0.00%	0.00%	0.00%	100.00%

TABLE A4
4-Year Transition Matrix (Calculated Based on 1-Year S&P Matrix)

From Rating	To Rating							
	AAA	AA	A	BBB	BB	B	CCC	D
AAA	70.09%	24.02%	4.72%	0.81%	0.24%	0.08%	0.01%	0.02%
AA	1.87%	68.65%	24.16%	4.13%	0.54%	0.43%	0.08%	0.15%
A	0.22%	6.11%	71.88%	17.81%	2.49%	0.91%	0.16%	0.43%
BBB	0.09%	0.93%	12.41%	67.88%	12.38%	3.82%	0.65%	1.84%
BB	0.12%	0.26%	1.97%	15.59%	52.24%	19.45%	2.71%	7.66%
B	0.01%	0.20%	0.87%	2.66%	14.81%	50.40%	6.76%	24.29%
CCC	0.00%	0.06%	0.76%	1.46%	4.74%	17.80%	10.54%	64.66%
D	0.00%	0.00%	0.00%	0.00%	0.00%	0.00%	0.00%	100.00%

TABLE A5
Transition Probabilities

Transition Description	Transition	Time Horizon			
		1 Year	2 Years	3 Years	4 Years
Downgrade	A to BBB	6.53%	12.26%	17.32%	21.79%
Default	A to D	0.05%	0.14%	0.26%	0.43%

Appendix B: Capital Adequacy Formulas and Ratings

TABLE B1
Capital Adequacy Formula Definitions

<p>RBC = $R_0 + (R_1^2 + R_2^2 + (.5 \times R_3)^2 + [(0.5 \times R_3) + R_4]^2 + R_5^2)^{1/2}$</p> <p>R₀ = Noncontrolled Assets and Growth Risk R₁ = Fixed Income Investment Risk R₂ = Equity Investment Risk R₃ = Receivables Risk R₄ = Net Loss&LAE Reserve Risk R₅ = Net Written Premium Reserve Risk</p>
<p>Bests Absolute Capital Adequacy Ratio = Adjusted Surplus / Net Required Capital</p> <p>Net Required Capital = $(B1^2 + B2^2 + B3^2 + (.5 \times B4)^2 + [(0.5 \times B4) + B5]^2 + B6^2 + B7^2)^{1/2}$</p> <p>B1 = Fixed Income Securities B2 = Equity Securities B3 = Interest Rate B4 = Credit B5 = Loss&LAE Reserves B6 = Net Written Premium B7 = Off Balance Sheet</p>
<p>S&P CAR =</p> <p>$\frac{\text{Total Adjusted Capital} - \text{Asset Related Risk Charges} - \text{Credit Related Risk Charges}}{\text{Underwriting Risk} + \text{Reserve Risk} + \text{Other Business Risk}}$</p> <p>Total Adjusted Capital = Statutory Surplus +/- Loss Reserve Deficiency + Time Value of Money</p>

TABLE B2
Risk-Based Capital Threshold Definitions

RBC Rating Level	Percentage & Base
Authorized Control Level	50% Total RBC After Covariance
Company Action Level	200% Authorized Control Level
Regulatory Action Level	150% Authorized Control Level
Authorized Control Level	100% Authorized Control Level
Mandatory Control Level	70% Authorized Control Level

TABLE B3
S&P CAR Rating Threshold Definitions

Capital Adequacy Ratio	Assessment of Capital Adequacy
175% and above	Extremely Strong
150% to 174%	Very Strong
125% to 149%	Strong
100% to 124%	Good
Below 100%	Marginal

TABLE B4
S&P Rating Descriptions

Rating	Description
AAA	Extremely strong capacity to meet financial commitment.
AA	Very strong capacity to meet financial commitment. Differs from AAA only in small degree.
A	Strong capacity to meet financial commitment. Somewhat more susceptible to adverse economic conditions than higher-rated obligations.
BBB	Adequate protection. Adverse economic conditions more likely to lead to a weakened capacity.
BB to C	Having significant speculative characteristics.
BB	Less vulnerable to nonpayment than other speculative issues.
B	More vulnerable.
CCC	Currently vulnerable.
CC	Highly vulnerable.
C	Bankruptcy petition filed, payments continue.
D	Payments are not made on the date due or upon the filing of a bankruptcy petition or the taking of a similar action if payments on an obligation are jeopardized.

Appendix C: Falcon Insurance Company Illustrative Calculations

The calculation of capital release described in the body of the text indicates that initial capital should be re-adjusted such that the probability of exceeding the selected risk threshold is equal to the transition probability. Tables C1 and C2 illustrate a direct method for calculating the capital available for release that does not require iteration.²⁴

The first line of each calculation in Tables C1 and C2 is the transition probability derived from Table A5. Secondly, the downside percentile, based on the transition probability, of the distribution for the desired financial variable is calculated. This percentile result is then compared to the target risk threshold. The difference between the percentile and the target risk threshold is then multiplied by the denominator of the regulatory or rating agency formula to calculate the capital available for release at that given future period of time. The current capital available for release is the capital available for release at the future period of time discounted by the projected return on the asset portfolio. For a full multi-stakeholder analysis, this calculation would be repeated for each financial variable, risk threshold and time horizon.

TABLE C1
Calculation of Capital Release: RBC Default Measure

		Time Horizon (t)			
		1 Year	2 Years	3 Years	4 Years
(1)	VaR Threshold: Probability of Moving from A to D or lower over t years	0.05%	0.14%	0.26%	0.43%
	VaR of RBC	248%	164%	96%	55%
(2)	Target RBC: Authorized Control Level Threshold	100%	100%	100%	100%
(3)=(1)-(2)	Difference	148%	64%	-4%	-45%
(4)	Mean Net Required Capital	982,914	999,613	984,822	938,434
(5)=(3)*(4)	Capital Release	1,453,599	636,292	(40,039)	(417,771)
(6)	Geometric Annual Return on Assets	4.38%	4.33%	4.29%	4.24%
(7)	Time Horizon	1	2	3	4
(8)=(5)/[1+(6)]^(7)	Current Capital Available for Release	1,392,603	584,535	(35,302)	(353,835)

²⁴ This direct method does not required interactive runs of the DFA model. It is an approximation of the result that is useful for illustrating the process.

TABLE C2
Calculation of Capital Release: S&P CAR Downgrade Measure

		Time Horizon (t)			
		1 Year	2 Years	3 Years	4 Years
(1)	VaR Threshold: Probability of Moving from A to BBB or lower over t years	6.53%	12.26%	17.32%	21.79%
	VaR of S&P CAR	226%	240%	252%	251%
(2)	Target S&P CAR: A/BBB Threshold Stated by S&P	125%	125%	125%	125%
(3)=(1)-(2)	Difference	101%	115%	127%	126%
(4)	Mean C3 (Underwriting Risk)	327,697	332,849	337,513	341,502
(5)	Mean C4 (Reserve Risk)	489,259	511,133	534,187	554,888
(6)	Mean C5 (Other Business Risk)	0	0	0	0
(7)=(4)+(5)+(6)	Sum of C3, C4, C5	816,956	843,982	871,700	896,390
(8)=(3)*(7)	Capital Release	828,731	974,084	1,103,775	1,128,316
(9)	Geometric Annual Return on Assets	4.38%	4.33%	4.29%	4.24%
(10)	Time Horizon	1	2	3	4
(11)=(8)/[1+(9)]^(10)	Current Capital Available for Release	793,956	894,850	973,183	955,638

Appendix D: The Marriage of ERM and DFA

This paper uses a dynamic financial analysis framework to analyze capital adequacy.

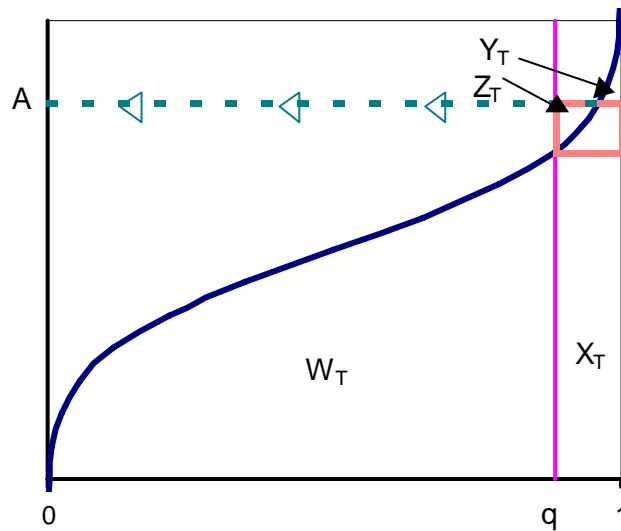
Often there is a significant distinction made between DFA and ERM. Some have described ERM as DFA plus operational risk. We believe this is an inaccurate representation of both ERM and DFA. ERM is a process that evaluates the interactions of a full set of risks inherent in a business. DFA is a type of stochastic analysis that models the risks and rewards of an operation in terms of financial results. DFA models can, and are, used to quantify the financial implications of an ERM evaluation. Most of the current capital adequacy measures are based on financial variables, whether they be statutory, GAAP or economic based, that can result from a DFA model. DFA models can be used to consider the implications of all financial risks that are considered in an ERM process.

Senior management is increasingly interested in the risk identification and analysis that evolves from an ERM process as well as how it will impact the operation financially. They want to understand the impact of various risks on cash flow, income, and the balance sheet. They are interested in the resulting expectation and volatility of profitability, return on capital and solvency. In this paper DFA models are used to generate projections of financial variables to analyze capital adequacy.

Appendix E: Tail Value at Risk Defined

Tail value at risk (TVaR) combines the ideas behind VaR and expected policyholder deficit (EPD) into a single measure. TVaR is considered a coherent measure of risk. In order to calculate the TVaR result, a TVaR risk tolerance criterion must first be selected. The TVaR tolerance is conceptually similar to the VaR tolerance in that it is based on selecting an appropriate point along the x-axis. In Figure E1 the TVaR tolerance²⁵ is equal to $1 - q = \alpha$. Referring to Figure E1, the sum of all potential events is equal to $W_T + X_T + Y_T$. All results to the right of the vertical line, defined by the TVaR tolerance α , are considered “tail events.” The sum of these tail events is equal to $X_T + Y_T$. The average tail event is equal to the Tail Value at Risk. Graphically, the TVaR is equal to the height of the $X_T + Z_T$ such that the area of $(X_T + Z_T)$ equals the area of $(X_T + Y_T)$.

Figure E1
Tail Value at Risk Calculation



$$A = \frac{\int_q^1 F^{-1}(x) dx}{1-q} \quad ; A = \text{TVaR}$$

²⁵ For a VaR tolerance of α_v and a TVaR tolerance of α_t , if $\alpha_v = \alpha_t$ and $F^{-1}(x)$ is a continuously increasing function, then TVaR Required Capital \geq VaR Required Capital.

Appendix F: Model Specifications to Support a Multi-Objective Approach

A risk modeling platform must have certain characteristics to support this multi-objective approach to capital adequacy analysis. In general, the model should be a multi-year, multi-factor, integrated ERM/DFA model. It must:

Model All Significant Risks on Both Cash Flow and Accounting Bases

The platform for this analysis should specifically model all of the significant risk factors that an insurance company faces. This includes quantification of operating risks. The uncertainty of the cash flow must be represented in the modeling process. These cash flows will support the development of economic value (i.e., economic capital) measures and the accounting accruals that support the calculation of statutory and GAAP capital.

Calculate All Relevant Financial Measures that Support Capital Adequacy Analysis

The platform should calculate stochastic projections for all of the key financial measures previously identified. These measures include: economic value, statutory surplus, GAAP equity, operating income, RBC, S&P CAR and BCAR.

Produce Multi-Year Projections that Incorporate the Changing Diversification and Correlation Characteristics of Key Risks

This calls for an integrated modeling platform that produces multi-year financial valuations.

Be Flexible to Allow Various Risk Thresholds to Be Evaluated

The model must produce distributions of key financial variables. Risk thresholds can then be overlaid on these distributions to evaluate the indicated level of capital. Additionally, the ability to define differing risk thresholds will also assist in sensitivity testing of the results.

Appendix G: Description of Falcon Insurance Company

Falcon Insurance Company is a fictional multi-line property casualty insurer developed for use in this paper using NAIC Statutory Annual Statement data. As such, it represents a realistic financial position of a mid-cap p/c insurer. A four-year business plan was selected for Falcon based on the authors' judgment using four broad business segments. A summary of Falcon's financial statements and business plan appears in the tables below.

Balance Sheet

Balance Sheet in \$000 as of:					
	12/31/2005	12/31/2006	12/31/2007	12/31/2008	12/31/2009
Invested Assets	6,218,789	6,441,400	6,789,482	7,159,983	7,519,707
Loss & LAE Reserves	3,655,520	3,607,737	3,752,538	3,911,168	4,056,640
Unearned premium	1,292,439	1,439,365	1,459,669	1,478,344	1,494,531
Statutory Surplus	1,780,431	1,933,323	2,120,102	2,323,279	2,427,272

Income Statement

Income Statement in \$000s				
	2006	2007	2008	2009
Net Written Premium	2,878,167	2,916,011	2,950,782	2,980,739
Net Earned Premium	2,731,241	2,895,708	2,932,107	2,964,552
Net Investment Income	285,087	308,238	329,577	352,231
Incurred Loss & LAE	1,828,832	1,947,456	1,978,133	2,016,140
Expenses	896,545	907,653	917,891	926,710
Taxes	99,773	115,533	122,054	125,955
Statutory Net Income	191,177	233,304	243,605	247,977
Loss Ratio	67.0%	67.3%	67.5%	68.0%
Expense ratio	31.1%	31.1%	31.1%	31.1%
Combined Ratio	98.1	98.4	98.6	99.1
Avg. Investment Yield	4.5%	4.7%	4.7%	4.8%

Cash Flow

Cash Flow in \$000s				
	2006	2007	2008	2009
Collected Premium	2,861,257	2,905,642	2,941,255	2,972,531
Paid Loss & LAE	1,876,616	1,802,654	1,819,503	1,870,667
Expenses Paid	896,545	907,653	917,891	926,710
Underwriting Cash Flow (pre-tax)	88,096	195,335	203,861	175,153
Net Investment Cash Flow	229,890	249,358	271,680	293,521
Taxes Paid	110,572	115,490	122,056	126,191
Net Operating Cash Flow	207,415	329,203	353,484	342,484

References

- Almagro, M., and Sonlin, S.M. 1995. An approach to evaluating asset allocation strategies for property/casualty insurance companies. *Casualty Actuarial Society Discussion Paper Program on Incorporating Risk Factors in Dynamic Financial Analysis*: 55-79. <http://www.casact.org/pubs/dpp/dpp95/95dpp055.pdf>
- A.M. Best Company, Inc. 1998. Best week property/casualty supplement: A.M. Best enhances its capital model as P/C industry improves its capital management tools. June 18.
- — — . 1994. Best week special supplement: RBC: The use of capital adequacy models in Best's rating process. October 24.
- Artzner, P. 1999. Application of coherent risk measures to capital requirements in insurance. *North American Actuarial Journal* 3 (2): 11-25. http://library.soa.org/library/naaj/1997-09/naaj9904_1.pdf
- Artzner, P., Delbaen, F., Eber, J.-M., and Heath, D. 1997. Thinking coherently. *Risk* 10, November: 68-71.
- — — . Coherent measures of risk. 1999. *Math. Finance* 9(3): 203-228. <http://www.math.ethz.ch/~delbaen/ftp/preprints/CoherentMF.pdf>
- Bault, T.R. 1995. Risk loads for insurers [Discussion]. *Proceedings of the Casualty Actuarial Society* LXXXII. <http://www.casact.org/pubs/proceed/proceed95/index.htm>
- Brender, A., Brown, R., and Panjer, H. 1993. A synopsis and analysis of research on surplus requirements for property and casualty insurance companies. *Casualty Actuarial Society Forum*. Summer. <http://www.casact.org/pubs/forum/93sforum/93sf001.pdf>
- Burkett, J., McIntyre, T., and Sonlin, S.M. 2001. DFA insurance company case study, Part I: Reinsurance and asset allocation. *Casualty Actuarial Society Forum*. Summer.
- Butsic, R.P. 1992. Solvency measurement for property-liability risk-based capital applications. *Discussion Papers on Insurer Financial Solvency, CAS*. <http://www.casact.org/library/valuation/92dp311.pdf>

- Correnti, S., and Sweeney, J.C. 1994. Asset-liability management and asset allocation for property and casualty companies—The final frontier. *Proceedings of the 4th International AFIR Colloquium*.
<http://investors.swissre.com/e/investors/institutional/asset/publications.Paras.0017.File.doc>
- — —. 1995. The dynamics of interest rate movements and inflation on assets, liabilities, and surplus for property and casualty insurer. *Proceedings of the 5th International AFIR Colloquium*.
<http://investors.swissre.com/e/investors/institutional/asset/publications.Paras.0005.File.doc>
- Correnti, S., Nealon, P., and Sonlin, S. 1996. Decomposing risk to enhance ALM and business decision making for insurance companies. *Proceedings of the 6th International AFIR Colloquium*.
<http://investors.swissre.com/e/investors/institutional/asset/publications.Paras.0008.File.doc>
- — —. 1997. Total integrative risk management: A practical application for making strategic decisions. *Proceedings of the 7th International AFIR Colloquium*.
<http://investors.swissre.com/e/investors/institutional/asset/publications.Paras.0013.File.doc>
- Correnti S., Sonlin, S.M., and Isaac, D.B. 1988. Applying a DFA model to improve strategic business decisions. *Casualty Actuarial Society Forum*. Summer: 15-51.
<http://www.casact.org/pubs/forum/98sforum/98sf015.pdf>
- Dempster, M.A.H., and Thorlacius, A.E. 1998. Stochastic simulation of international economic variables and asset returns: The falcon asset model. *Proceedings of the 8th International AFIR Colloquium*.
- Ettlinger, K.H., Hamilton, K.L., and Krohm, G. 1995. *State Insurance Regulation*. First Edition. Malvern, PA: Insurance Institute of America.
- Evolution in risk and capital management—New value propositions for P&C insurers / reinsurers. Conning Research & Consulting, 11/17/2005.
- Feldblum, S. 1996. NAIC property/casualty insurance company risk-based capital requirements. *Proceedings of the Casualty Actuarial Society LXXXIII*.
<http://www.casact.org/pubs/proceed/proceed96/96297.pdf>

- Feldblum, S. 1990. Risk loads for insurers. *Proceedings of the Casualty Actuarial Society* LXXVII. <http://www.casact.org/pubs/proceed/proceed90/index.htm>
- Halliwell, L.J. 1999. ROE, utility and the pricing of risk. *CAS Forum* . Spring. Reinsurance Call Papers. <http://www.casact.org/PUBS/forum/99spforum/99spf071.pdf>
- Hamilton, D., Varma, P., Ou, S., and Cantor, R., ed. 2006. Default and recovery rates of corporate bond issuers, 1920-2005. Moody's Investors Service, January.
- Ingram, D., Santori, L., and Puccia, M., ed. Evaluating the enterprise risk management practices of insurance companies. Standard & Poor's, 10/17/2005.
- Isaac, D. 2002. Allocating the cost of capital—Practical examples. Casualty Actuarial Society, Spring Meeting, San Diego, CA. <http://www.casact.org/coneduc/spring/2002/handouts/isaac1.ppt>.
- Isaac, D., and Babcock, N. 2001. Beyond the frontier: Using a DFA model to derive the cost of capital. *Proceedings of the XXXIInd International ASTIN Colloquium* 1.
- Lowe, S.P., and J.N. Stanard. 1997. An integrated dynamic financial analysis and decision support system for a property catastrophe reinsurer. *ASTIN Bulletin* 27(2) November : 339-371. <http://www.casact.org/library/astin/vol27no2/339.pdf>
- Mango, D.F. 1999. Risk load and the default rate of surplus. CAS Discussion Papers on Securitization of Risk. <http://www.casact.org/pubs/dpp/dpp99/99dpp175.pdf>
- Mango, D.F., and Mulvey, J.M. 2000. Capital adequacy and allocation using dynamic financial analysis. Summer: Dynamic Financial Analysis Call Papers, CAS. <http://www.casact.org/pubs/forum/00sforum/00sf055.pdf>
- Markowitz, H.M. 1987. *Mean-Variance Analysis in Portfolio Choice and Capital Markets*, Cambridge, MA: Basil Blackwell.
- Meyers, G. 1989. An analysis of the capital structure of an insurance company. *Proceedings of the Casualty Actuarial Society* LXXVI. <http://www.casact.org/pubs/proceed/proceed89/89147.pdf>

- — —. 1999. Underwriting risk. *Spring Forum*, Casualty Actuarial Society.
<http://www.casact.org/pubs/forum/99spforum/99spftoc.htm>
- — —. 2000. Coherent measures of risk: An exposition for the lay actuary. *CAS Forum*.
<http://www.casact.org/pubs/forum/00sforum/meyers/Coherent%20Measures%20of%20Risk.pdf>
- Nakada, P., Shah, H., Koyluoglu, H.U., and Collingnon, O. 1999. P&C RAROC: A catalyst for improved capital management in the property and casualty insurance industry. *The Journal of Risk and Finance*, Fall.
- National Association of Insurance Commissioners. 1998. *Risk-Based Capital Overview and Instructions—Property and Casualty*. Kansas City, MO: National Association of Insurance Commissioners Publication Department.
- National Association of Insurance Commissioners, ed. 2005. Property and Casualty Risk-Based Capital Report, 10/14/2005.
- Panjer, H.H., ed. *Financial Economics*. 1998. Schaumburg, IL: The Actuarial Foundation.
- Patrik, G.S., Bernegger, S., and Rüegg, M.B. 1999. The use of risk adjusted capital to support business decision-making. *CAS Forum Spring*, Reinsurance Call Papers.
<http://www.casact.org/pubs/forum/99spforum/99spf243.pdf>
- Philbrick, S.W. 1994. Accounting for risk margins. *Casualty Actuarial Society Forum*, Spring.
- — —. 1999. Capital allocation. *The Actuarial Review* 26(1).
<http://www.casact.org/pubs/actrev/feb99/bstforms.htm>
- — —. 2000. Surplus allocation redux. *The Actuarial Review* 27 (1).
<http://www.casact.org/pubs/actrev/feb00/brainstorms.htm>
- Philbrick, S., and Painter, R. 2001. DFA insurance company case study, part II: Capital adequacy and allocation. *Casualty Actuarial Society Forum*, Summer.
- Roth Jr., R.J. 1992. Analysis of surplus and rate of return without using leverage ratios. Casualty Actuarial Society Discussion Paper Program May, Vol. 1.
<http://www.casact.org/pubs/dpp/dpp92/index.htm>

Shimpi, P.A., ed. 1999. *Integrating Corporate Risk Management*. New York: Swiss Re New Markets.

Standard & Poor's Rating Services. 1999. *Property/Casualty Insurance Ratings Criteria*. Columbus, OH: McGraw Hill Companies.

Stulz, R.M. Rethinking risk management. 2001. *The New Corporate Finance: Where Theory Meets Practice*. Third edition. Chew, D.H., ed; Columbus, OH: McGraw-Hill/Irwin.

Vazza, D., and Aurora, D., ed. 2006. Annual 2005 Global Corporate Default Study and Rating Transitions. Standard & Poor's.
<http://www2.standardandpoors.com/spf/pdf/fixedincome/AnnualDefaultStudy2005.pdf>