

# CHAIRPERSON'S CORNER

## Section Activities

By Breanne Richins

It's an honor to serve as the chair of the Education and Research Section Council and to work with other dedicated actuaries on issues relevant to our common mission, which is to:

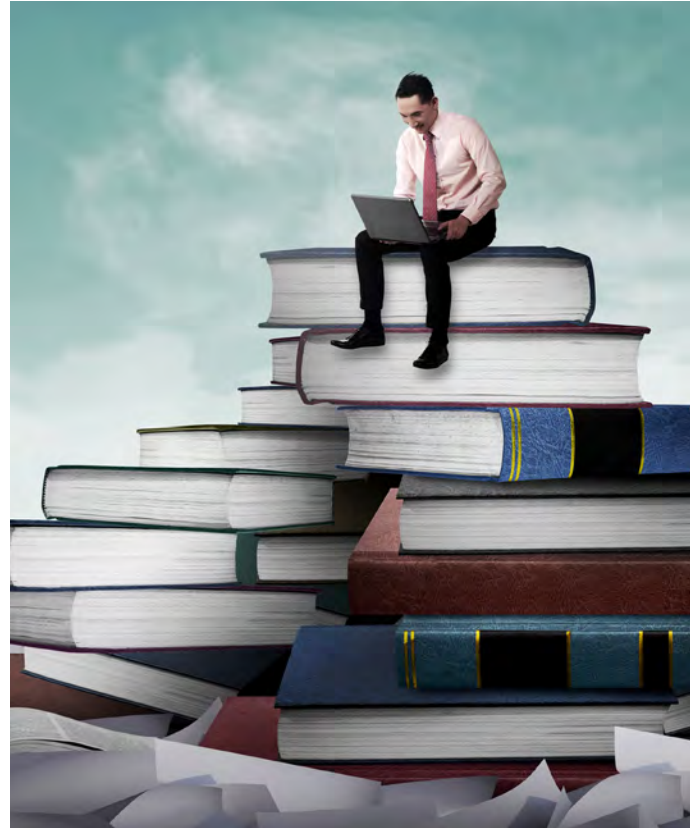
Facilitate expanding the knowledge base of the actuarial profession, promote ties between business actuaries, academic actuaries and actuarial educators, and seek ways to support and encourage actuarial education and research.

In line with our mission, we're excited to support the 2019 Actuarial Research Conference that will be held Aug. 14–17 at Indiana University–Purdue University Indianapolis (IUPUI) in Indianapolis. This event is jointly sponsored by Purdue University, IUPUI, Ball State University, Butler University, and University of Notre Dame. There will be presentations and discussions on a wide range of topics, and presenters include academics, industry experts and graduate students. Awards will be given for the best presentations among graduate students.

We are also pleased to announce that the 2020 Actuarial Research Conference will be hosted by the University of Nebraska-Lincoln.

Additionally, we will be sponsoring sessions at the major Society of Actuaries (SOA) meetings including the Life & Annuity Symposium, Health Meeting, and the 2019 SOA Annual Meeting & Exhibit.

If you have any questions about the section or any of the conferences/meetings, have an interest in actuarial education and/or



actuarial research, or would like to join us as a member or as an active friend of the council, please do not hesitate to contact me.

We hope that you enjoy this new format of the newsletter. We are also excited to launch the digital version of *Expanding Horizons* with this issue. It can be accessed through the section newsletter tab at <https://www.soa.org/sections/education-research/educ-research-newsletter/>. ■



Breanne Richins, FSA, is an education specialist at the University of Minnesota. She can be reached at [richi018@umn.edu](mailto:richi018@umn.edu).