

Figure 1: December 2000 DMF-PR Deaths By Death Year (DY)

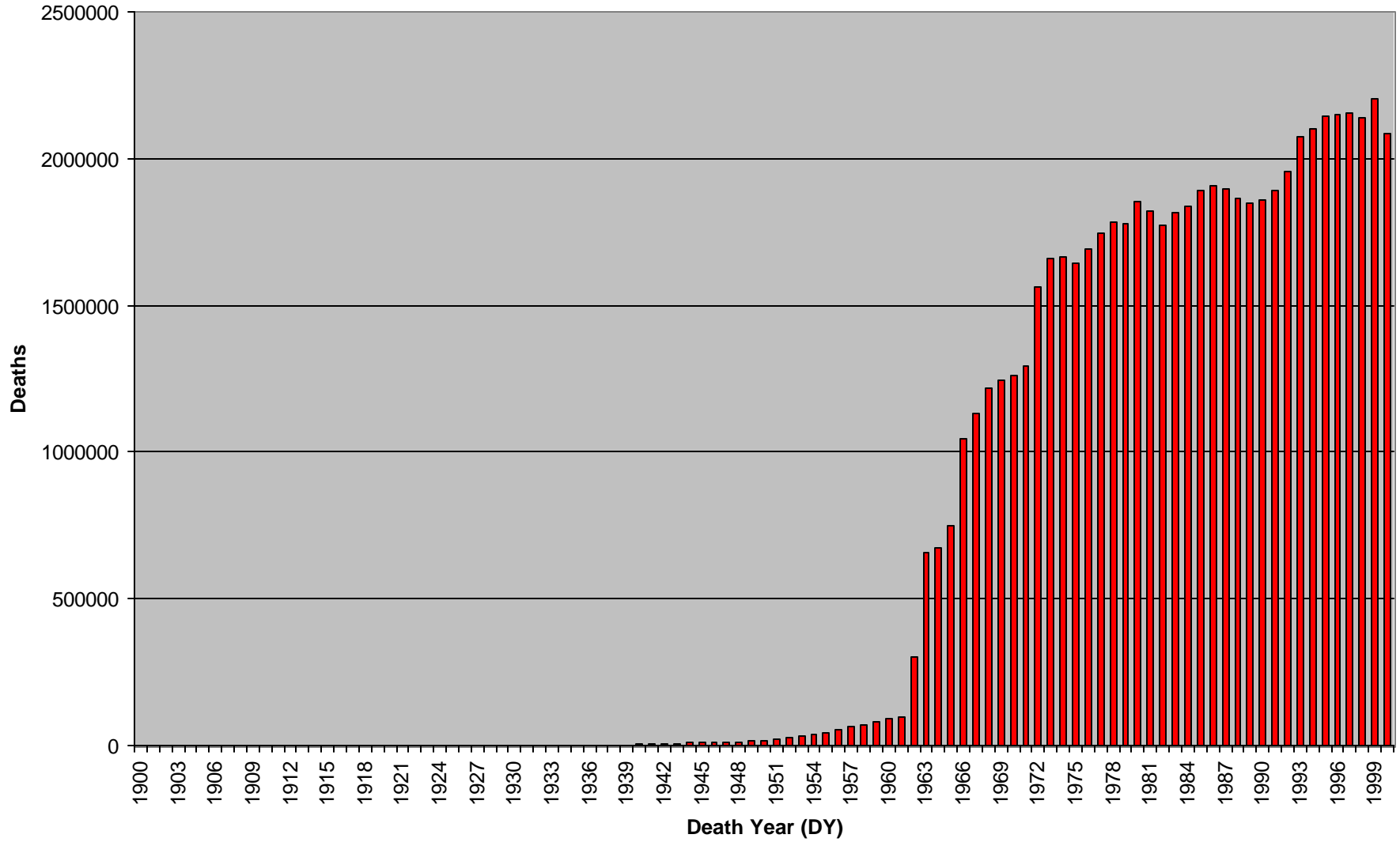
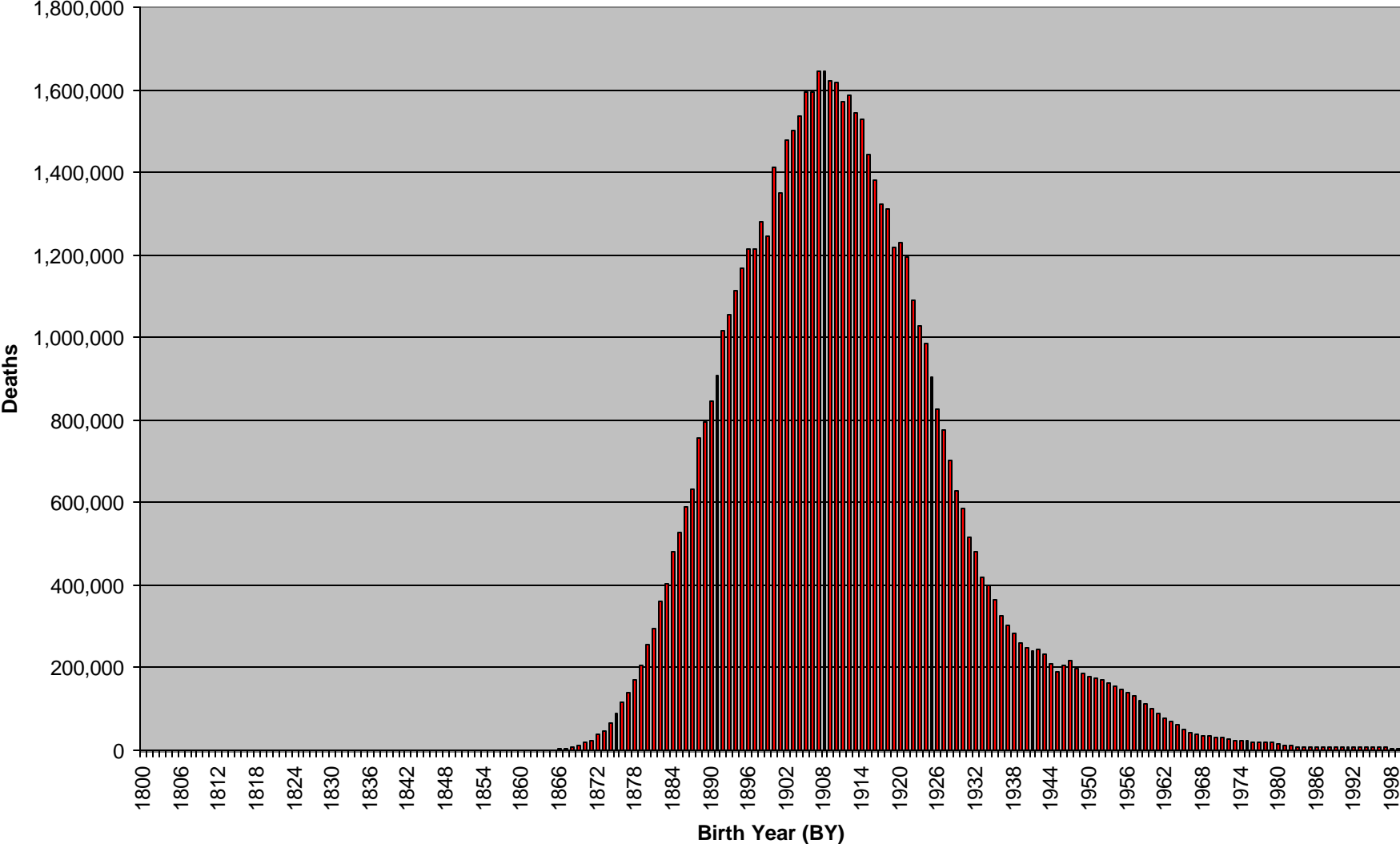


Figure 2: December 2000 DMF-PR Deaths By Birth Year (BY)



NDI (series 1) Vs. DMF (series 2)

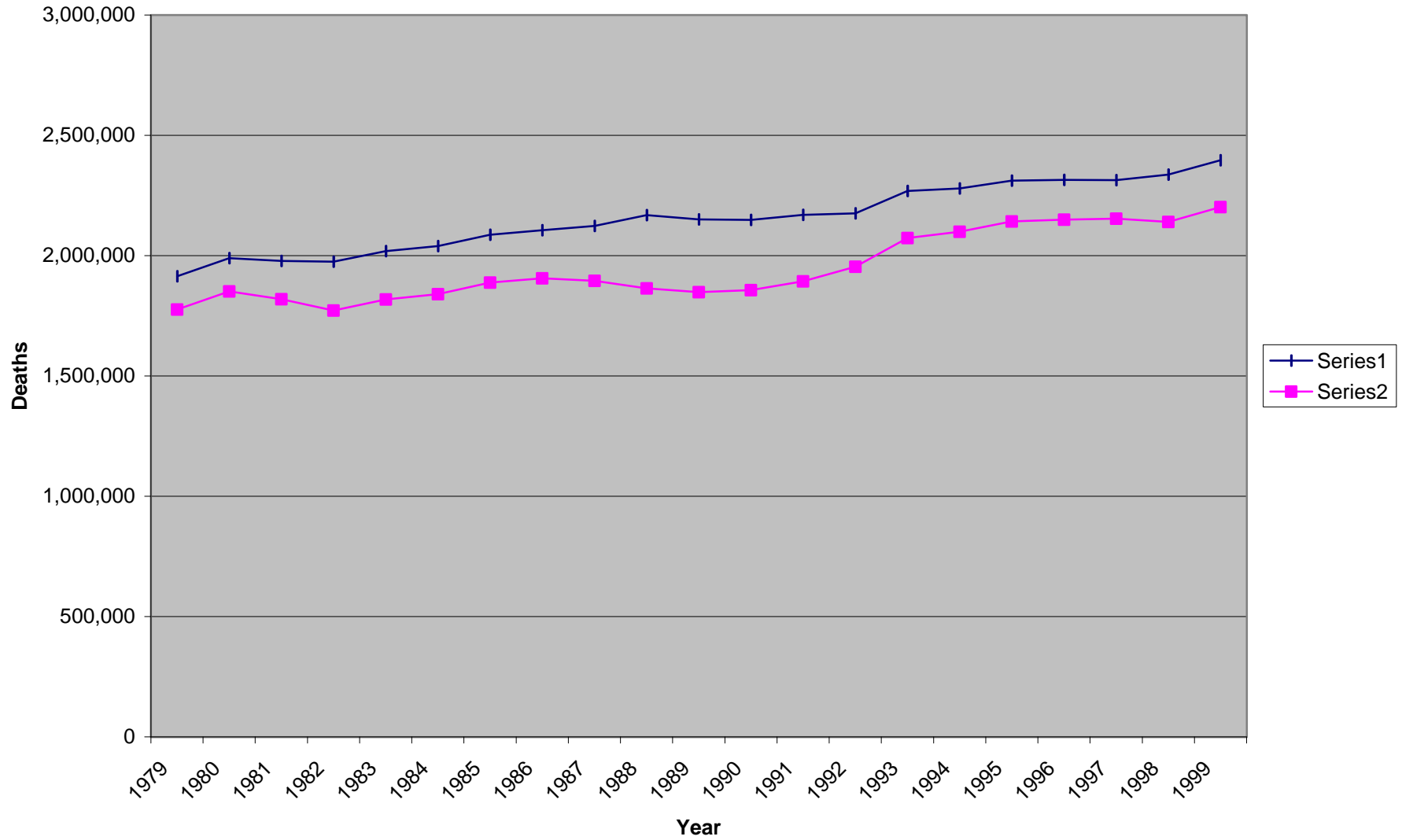


Table 2. December 2000 DMF-PR Total Deaths and Centenarian and Near-Centenarian Deaths (Quinquennial Age Groups) By Quinquennial Death Year Cohorts 1900-2000

DY	total deaths	deaths 95-99	deaths 100-104	deaths 105-109	deaths 110-114	deaths 115-119	deaths 120-124	deaths 125-129
2000	2,087,744	88,752	18,610	1,896	79	5	1	1
1995-1999	10,788,204	415,764	90,408	9,150	457	36	10	3
1990-1994	9,876,342	338,863	71,367	6,508	361	27	5	1
1985-1989	9,401,648	285,662	53,730	4,831	380	55	14	4
1980-1984	9,099,725	211,512	37,020	3,363	423	159	20	7
1975-1979	8,639,130	148,444	23,893	2,239	419	361	41	11
1970-1974	7,442,344	104,701	15,872	1,144	143	69	136	64
1965-1969	5,385,406	60,502	7,410	539	75	33	28	17
1960-1964	1,822,154	4,239	638	48	24	8	0	5
1955-1959	308,173	17	319	19	14	4	2	7
1950-1954	138,549	9	142	7	10	4	4	1
1945-1949	62,109	2	109	4	11	1	1	1
1940-1944	32,166	7	60	5	7	3	2	2
1935-1939	4,326	2	53	4	4	4	1	0
1930-1934	266	12	43	5	8	0	0	0
1925-1929	216	8	64	5	7	2	0	0
1920-1924	231	16	54	12	9	2	0	0
1915-1919	253	11	48	10	8	0	0	0
1910-1914	169	7	64	8	0	0	0	0
1905-1909	161	12	36	3	0	0	0	0
1900-1904	177	17	35	0	0	0	0	0
allyrs	65,089,493	1,658,559	319,975	29,800	2,439	773	265	124
1965-2000	62,720,543	1,654,200	318,310	29,670	2,337	745	255	108
1900-1964	2,368,950	4,359	1,665	130	102	28	10	16

Table 3. December 2000 DMF-PR Centenarian and Near-Centenarian Deaths In Each Quinquennial Age Group Displayed As Percentages of Total Centenarian and Near-Centenarian Deaths By Quinquennial Death Year Cohort 1900-2000

DY	total deaths 95-129	deaths 95-99 %95-129	deaths 100-104 %95-129	deaths 105-109 %95-129	deaths 110-114 %95-129	deaths 115-119 %95-129	deaths 120-124 %95-129	deaths 125-129 %95-129
2000	109,344	81.17	17.02	1.73	0.07	0.00	0.00	0.00
1995-1999	515,828	80.60	17.53	1.77	0.09	0.01	0.00	0.00
1990-1994	417,132	81.24	17.11	1.56	0.09	0.01	0.00	0.00
1985-1989	344,676	82.88	15.59	1.40	0.11	0.02	0.00	0.00
1980-1984	252,504	83.77	14.66	1.33	0.17	0.06	0.01	0.00
1975-1979	175,408	84.63	13.62	1.28	0.24	0.21	0.02	0.01
1970-1974	122,129	85.73	13.00	0.94	0.12	0.06	0.11	0.05
1965-1969	68,604	88.19	10.80	0.79	0.11	0.05	0.04	0.02
1960-1964	4,962	85.43	12.86	0.97	0.48	0.16	0.00	0.10
1955-1959	382	4.45	83.51	4.97	3.66	1.05	0.52	1.83
1950-1954	177	5.08	80.23	3.95	5.65	2.26	2.26	0.56
1945-1949	129	1.55	84.50	3.10	8.53	0.78	0.78	0.78
1940-1944	86	8.14	69.77	5.81	8.14	3.49	2.33	2.33
1935-1939	68	2.94	77.94	5.88	5.88	5.88	1.47	0.00
1930-1934	68	17.65	63.24	7.35	11.76	0.00	0.00	0.00
1925-1929	86	9.30	74.42	5.81	8.14	2.33	0.00	0.00
1920-1924	93	17.20	58.06	12.90	9.68	2.15	0.00	0.00
1915-1919	77	14.29	62.34	12.99	10.39	0.00	0.00	0.00
1910-1914	79	8.86	81.01	10.13	0.00	0.00	0.00	0.00
1905-1909	51	23.53	70.59	5.88	0.00	0.00	0.00	0.00
1900-1904	52	32.69	67.31	0.00	0.00	0.00	0.00	0.00
allyrs	2,011,935	82.44	15.90	1.48	0.12	0.04	0.01	0.01
1965-2000	2,005,625	82.48	15.87	1.48	0.12	0.04	0.01	0.01
1900-1964	6,310	69.08	26.39	2.06	1.62	0.44	0.16	0.25

Table 4. December 2000 DMF-PR Centenarian Deaths By Quinquennial Death Year
 Cohort: Centenarian Deaths As Percentage of Total Deaths With Quinquennial Age
 Groups Displayed As Percentage of Next Lower Quinquennial Age Group

DY	deaths 100-104 %95-99	deaths 105-109 %100-104	deaths 110-114 %105-109	deaths 115-119 %110-114	deaths 120-124 %115-119	deaths 125-129 %120-124	deaths 100-129 %total
2000	20.97	10.19	4.17	6.33	20.00	100.00	0.99
1995-1999	21.75	10.12	4.99	7.88	27.78	30.00	0.93
1990-1994	21.06	9.12	5.55	7.48	18.52	20.00	0.79
1985-1989	18.81	8.99	7.87	14.47	25.45	28.57	0.63
1980-1984	17.50	9.08	12.58	37.59	12.58	35.00	0.45
1975-1979	16.10	9.37	18.71	86.16	11.36	26.83	0.31
1970-1974	15.16	7.21	12.50	48.25	197.10	47.06	0.23
1965-1969	12.25	7.27	13.91	44.00	84.85	60.71	0.15
1960-1964	15.05	7.52	50.00	33.33	0.00	NA	0.04
1955-1959	1,876.47	5.96	73.68	28.57	50.00	350.00	0.12
1950-1954	1,577.78	4.93	142.86	40.00	100.00	25.00	0.12
1945-1949	5,450.00	3.67	275.00	9.09	100.00	100.00	0.20
1940-1944	857.14	8.33	140.00	42.86	66.67	100.00	0.25
1935-1939	2,650.00	7.55	100.00	100.00	25.00	0.00	1.53
1930-1934	358.33	11.63	160.00	0.00	NA	NA	21.05
1925-1929	800.00	7.81	140.00	28.57	0.00	NA	36.11
1920-1924	337.50	22.22	75.00	22.22	0.00	NA	33.33
1915-1919	436.36	20.83	80.00	0.00	NA	NA	26.09
1910-1914	914.29	12.50	0.00	NA	NA	NA	42.60
1905-1909	300.00	8.33	0.00	NA	NA	NA	24.22
1900-1904	205.88	0.00	NA	NA	NA	NA	19.77
allyrs	19.29	9.31	8.18	31.69	34.28	46.79	0.54
1965-2000	19.24	9.32	7.88	31.88	34.23	42.35	0.56
1900-1964	38.20	7.81	78.46	27.45	35.71	160.00	0.08

Table 5. December 2000 DMF-PR Centenarian and Near-Centenarian Deaths:
 Percentage Distribution of Each Quinquennial Age Group By Quinquennial
 Death Year Cohort

DY	%deaths 95-99	%deaths 100-104	%deaths 105-109	%deaths 110-114	%deaths 115-119	%deaths 120-124	%deaths 125-129
2000	5.35	5.82	6.36	3.24	0.65	0.38	0.81
1995-1999	25.07	28.25	30.70	18.74	4.66	3.77	2.42
1990-1994	20.43	22.30	21.84	14.80	3.49	1.89	0.81
1985-1989	17.22	16.79	16.21	15.58	7.12	5.28	3.23
1980-1984	12.75	11.57	11.29	17.34	20.57	7.55	5.65
1975-1979	8.95	7.47	7.51	17.18	46.70	15.47	8.87
1970-1974	6.31	4.96	3.84	5.86	8.93	51.32	51.61
1965-1969	3.65	2.32	1.81	3.08	4.27	10.57	13.71
1960-1964	0.26	0.20	0.16	0.98	1.03	0.00	4.03
1955-1959	0.00	0.10	0.06	0.57	0.52	0.75	5.65
1950-1954	0.00	0.04	0.02	0.41	0.52	1.51	0.81
1945-1949	0.00	0.03	0.01	0.45	0.13	0.38	0.81
1940-1944	0.00	0.02	0.02	0.29	0.39	0.75	1.61
1935-1939	0.00	0.02	0.01	0.16	0.52	0.38	0.00
1930-1934	0.00	0.01	0.02	0.33	0.00	0.00	0.00
1925-1929	0.00	0.02	0.02	0.29	0.26	0.00	0.00
1920-1924	0.00	0.02	0.04	0.37	0.26	0.00	0.00
1915-1919	0.00	0.02	0.03	0.33	0.00	0.00	0.00
1910-1914	0.00	0.02	0.03	0.00	0.00	0.00	0.00
1905-1909	0.00	0.01	0.01	0.00	0.00	0.00	0.00
1900-1904	0.00	0.01	0.00	0.00	0.00	0.00	0.00
allyrs	100.00	100.00	100.00	100.00	100.00	100.00	100.00
1965-2000	99.74	99.48	99.56	95.82	96.38	96.23	87.10
1900-1964	0.26	0.52	0.44	4.18	3.62	3.77	12.90

Table 6. December 2000 DMF-PR Total Deaths and Centenarian and Near-Centenarian Deaths (Quinquennial Age Groups) By Quinquennial Birth Year Cohorts 1800-1905

BY	total deaths	deaths 95-99	deaths 100-104	deaths 105-109	deaths 110-114	deaths 115-119	deaths 120-124	deaths 125-129
1905	1,594,056	27,361	0	0	0	0	0	0
1900-1904	7,280,555	359,422	7,213	0	0	0	0	0
1895-1899	6,122,406	358,641	79,518	873	0	0	0	0
1890-1894	4,936,537	302,906	77,697	8,401	43	0	0	0
1885-1889	3,299,915	235,682	57,261	7,103	414	3	0	0
1880-1884	1,793,435	167,949	41,900	5,116	388	30	0	0
1875-1879	720,646	116,433	26,411	3,567	309	27	8	0
1870-1874	194,779	76,632	18,045	2,515	401	53	8	4
1865-1869	27,371	13,218	9,615	1,364	417	162	10	0
1860-1864	2,871	203	1,243	677	260	354	15	4
1855-1859	655	16	347	89	92	59	33	3
1850-1854	395	3	156	22	27	48	114	10
1845-1849	293	2	110	16	20	16	60	57
1840-1844	160	7	60	5	11	5	7	25
1835-1839	122	3	49	4	9	4	2	8
1830-1834	136	15	47	3	8	1	1	5
1825-1829	190	10	61	4	7	3	4	5
1820-1824	197	12	56	4	5	4	2	0
1815-1819	202	10	49	11	9	0	1	3
1810-1814	139	13	62	9	7	2	0	0
1805-1809	154	12	39	11	9	2	0	0
1800-1804	96	9	36	6	3	0	0	0
allyrs	25,975,310	1,658,559	319,975	29,800	2,439	773	265	124
1875-1905	25,747,550	1,568,394	290,000	25,060	1,154	60	8	0
1800-1874	227,760	90,165	29,975	4,740	1,285	713	257	124

Table 7. December 2000 DMF-PR Centenarian and Near-Centenarian Deaths in Each Quinquennial Age Group Displayed As Percentages of Total Centenarian and Near-Centenarian Deaths By Quinquennial Birth Year Cohort 1800-1905

BY	total deaths 95-129	deaths 95-99 %95-129	deaths 100-104 %95-129	deaths 105-109 %95-129	deaths 110-114 %95-129	deaths 115-119 %95-129	deaths 120-124 %95-129	deaths 125-129 %95-129
1905	27,361	100.00	0.00	0.00	0.00	0.00	0.00	0.00
1900-1904	366,635	98.03	1.97	0.00	0.00	0.00	0.00	0.00
1895-1899	439,032	81.69	18.11	0.20	0.00	0.00	0.00	0.00
1890-1894	389,047	77.86	19.97	2.16	0.01	0.00	0.00	0.00
1885-1889	300,463	78.44	19.06	2.36	0.14	0.00	0.00	0.00
1880-1884	215,383	77.98	19.45	2.38	0.18	0.01	0.00	0.00
1875-1879	146,755	79.34	18.00	2.43	0.21	0.02	0.01	0.00
1870-1874	97,658	78.47	18.48	2.58	0.41	0.05	0.01	0.00
1865-1869	24,786	53.33	38.79	5.50	1.68	0.65	0.04	0.00
1860-1864	2,756	7.37	45.10	24.56	9.43	12.84	0.54	0.15
1855-1859	639	2.50	54.30	13.93	14.40	9.23	5.16	0.47
1850-1854	380	0.79	41.05	5.79	7.11	12.63	30.00	2.63
1845-1849	281	0.71	39.15	5.69	7.12	5.69	21.35	20.28
1840-1844	120	5.83	50.00	4.17	9.17	4.17	5.83	20.83
1835-1839	79	3.80	62.03	5.06	11.39	5.06	2.53	10.13
1830-1834	80	18.75	58.75	3.75	10.00	1.25	1.25	6.25
1825-1829	94	10.64	64.89	4.26	7.45	3.19	4.26	5.32
1820-1824	83	14.46	67.47	4.82	6.02	4.82	2.41	0.00
1815-1819	83	12.05	59.04	13.25	10.84	0.00	1.20	3.61
1810-1814	93	13.98	66.67	9.68	7.53	2.15	0.00	0.00
1805-1809	73	16.44	53.42	15.07	12.33	2.74	0.00	0.00
1800-1804	54	16.67	66.67	11.11	5.56	0.00	0.00	0.00
allyrs	2,011,935	82.44	15.90	1.48	0.12	0.04	0.01	0.01
1875-1905	1,884,676	83.22	15.39	1.33	0.06	0.00	0.00	0.00
1800-1874	127,259	70.85	23.55	3.72	1.01	0.56	0.20	0.10

Table 8. December 2000 DMF-PR Centenarian Deaths By Quinquennial Birth Year
 Cohort: Centenarian Deaths As Percentage of Total Deaths With Quinquennial Age
 Groups Displayed As Percentage of Next Lower Quinquennial Age Group

BY	deaths 100-104 %95-99	deaths 105-109 %100-104	deaths 110-114 %105-109	deaths 115-119 %110-114	deaths 120-124 %115-119	deaths 125-129 %120-124	deaths 100-129 %total
1905	0.00	NA	NA	NA	NA	NA	0.00
1900-1904	2.01	0.00	NA	NA	NA	NA	0.10
1895-1899	22.17	1.10	0.00	NA	NA	NA	1.31
1890-1894	25.65	10.81	0.51	0.00	NA	NA	1.74
1885-1889	24.30	12.40	5.83	0.72	0.00	NA	1.96
1880-1884	24.95	12.21	7.58	7.73	0.00	NA	2.64
1875-1879	22.68	13.51	8.66	8.74	29.63	0.00	4.21
1870-1874	23.55	13.94	15.94	13.22	15.09	50.00	10.79
1865-1869	72.74	14.19	30.57	38.85	6.17	0.00	42.26
1860-1864	612.32	54.47	38.40	136.15	4.24	26.67	88.92
1855-1859	2,168.75	25.65	103.37	64.13	55.93	9.09	95.11
1850-1854	5,200.00	14.10	122.73	177.78	237.50	8.77	95.44
1845-1849	5,500.00	14.55	125.00	80.00	375.00	95.00	95.22
1840-1844	857.14	8.33	220.00	45.45	140.00	357.14	70.63
1835-1839	1,633.33	8.16	225.00	44.44	50.00	400.00	62.30
1830-1834	313.33	6.38	266.67	12.50	100.00	500.00	47.79
1825-1829	610.00	6.56	175.00	42.86	133.33	125.00	44.21
1820-1824	466.67	7.14	125.00	80.00	50.00	0.00	36.04
1815-1819	490.00	22.45	81.82	0.00	NA	300.00	36.14
1810-1814	476.92	14.52	77.78	28.57	0.00	NA	57.55
1805-1809	325.00	28.21	81.82	22.22	0.00	NA	39.61
1800-1804	400.00	16.67	50.00	0.00	NA	NA	46.88
allyrs	19.29	9.31	8.18	31.69	34.28	46.79	1.36
1875-1905	18.49	8.64	4.60	5.20	13.33	0.00	1.23
1800-1874	33.24	15.81	27.11	55.49	36.04	48.25	16.29

Table 9. December 2000 DMF-PR Centenarian and Near-Centenarian Deaths:
 Percentage Distribution of Each Quinquennial Age Group By Quinquennial
 Birth Year Cohort

BY	%deaths 95-99	%deaths 100-104	%deaths 105-109	%deaths 110-114	%deaths 115-119	%deaths 120-124	%deaths 125-129
1905	1.65	0.00	0.00	0.00	0.00	0.00	0.00
1900-1904	21.67	2.25	0.00	0.00	0.00	0.00	0.00
1895-1899	21.62	24.85	2.93	0.00	0.00	0.00	0.00
1890-1894	18.26	24.28	28.19	1.76	0.00	0.00	0.00
1885-1889	14.21	17.90	23.84	16.97	0.39	0.00	0.00
1880-1884	10.13	13.09	17.17	15.91	3.88	0.00	0.00
1875-1879	7.02	8.25	11.97	12.67	3.49	3.02	0.00
1870-1874	4.62	5.64	8.44	16.44	6.86	3.02	3.23
1865-1869	0.80	3.00	4.58	17.10	20.96	3.77	0.00
1860-1864	0.01	0.39	2.27	10.66	45.80	5.66	3.23
1855-1859	0.00	0.11	0.30	3.77	7.63	12.45	2.42
1850-1854	0.00	0.05	0.07	1.11	6.21	43.02	8.06
1845-1849	0.00	0.03	0.05	0.82	2.07	22.64	45.97
1840-1844	0.00	0.02	0.02	0.45	0.65	2.64	20.16
1835-1839	0.00	0.02	0.01	0.37	0.52	0.75	6.45
1830-1834	0.00	0.01	0.01	0.33	0.13	0.38	4.03
1825-1829	0.00	0.02	0.01	0.29	0.39	1.51	4.03
1820-1824	0.00	0.02	0.01	0.21	0.52	0.75	0.00
1815-1819	0.00	0.02	0.04	0.37	0.00	0.38	2.42
1810-1814	0.00	0.02	0.03	0.29	0.26	0.00	0.00
1805-1809	0.00	0.01	0.04	0.37	0.26	0.00	0.00
1800-1804	0.00	0.01	0.02	0.12	0.00	0.00	0.00
allyrs	100.00	100.00	100.00	100.00	100.00	100.00	100.00
1875-1905	94.56	90.63	84.09	47.31	7.76	3.02	0.00
1800-1874	5.44	9.37	15.91	52.69	92.24	96.98	100.00

TABLE 10

December 2000 DMF-PR
Distribution of Deaths for Birth Year (BY) = 1808

Age (Y) Range	Death Year (DY) Range	Instances
92-99	1900-1907	6
100-104	1908-1912	7
105-109	1913-1917	3
110-114	1918-1922	1
115-119	1923-1927	0
120-124	1928-1932	0
125-129	1933-1937	0
130-134	1938-1942	0
135-139	1943-1947	1
140-144	1948-1952	4
145-150	1953-1957	8
151-155	1958-1962	9
155-159	1963-1967	3
160-164	1968-1972	7
165-169	1973-1977	0
170-174	1978-1982	0
175-179	1983-1987	0
180-184	1988-1992	0
185-189	1993-1997	0
190-192	1998-2000	1

Table 11

December 2000 DMF-PR
 Extreme Reported Ages At Death (Y) For
 Decennial Death Year (DY) Cohorts 1940-2000

Death Year (DY)	Total Instances Y > 130	Distribution By Y (Multiple Occurrences Shown in Parentheses)
2000	1	192
1990	1	158
1980	4	134, 162, 163, 177
1970	13	131(2), 133(2), 141(2), 145, 151, 153, 162, 163(2), 164
1960	17	133, 134, 138, 139, 141(4), 149, 151(2), 152(2), 153, 156, 157, 159
1950	5	131, 132, 134, 142, 149
1940	0	NA

Best Medicare (series 1) Vs. Extinct Cohort (series 2) 1000 q(x)

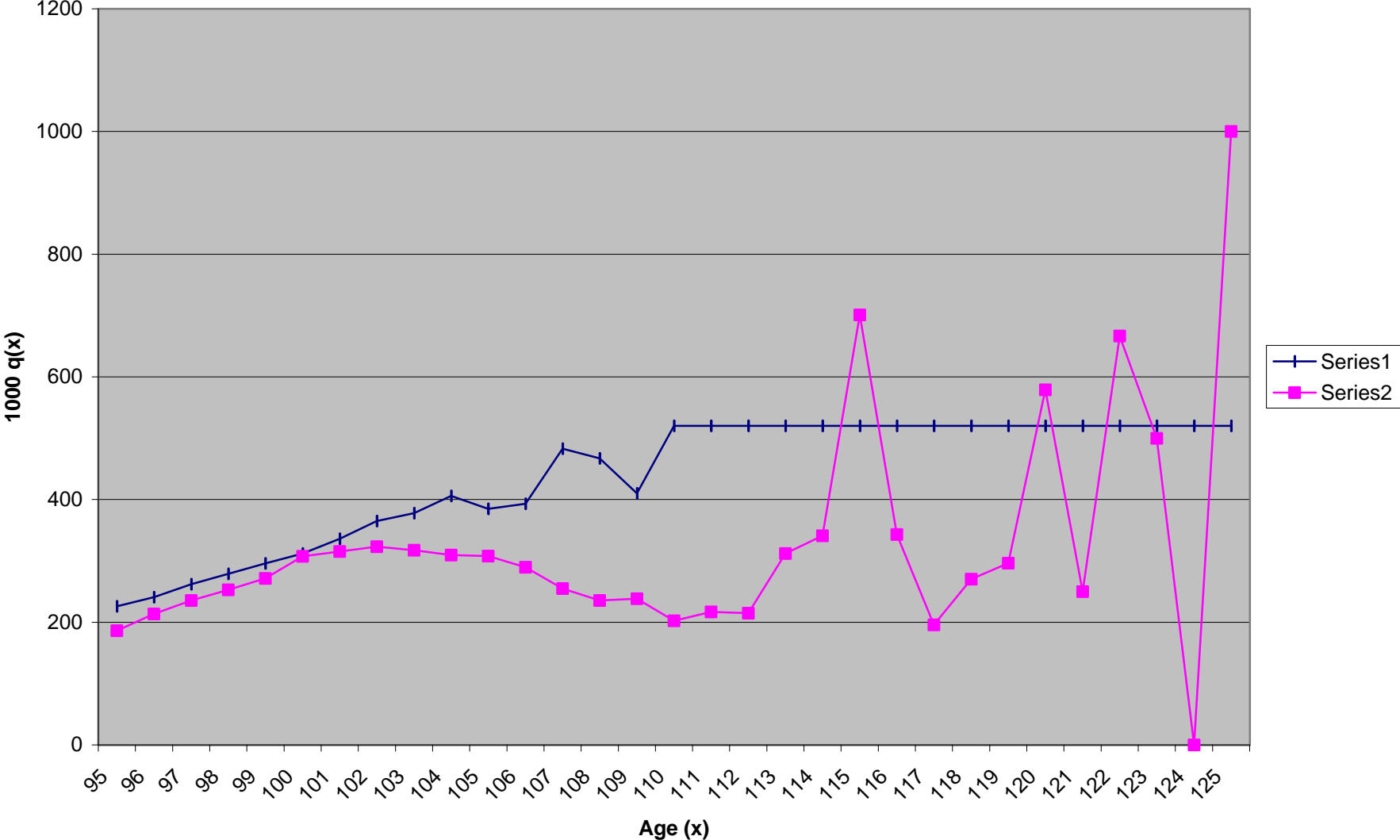


TABLE 13

Centenarian Mortality Rates
Based on U.S. Census Population Counts
and
SSA DMF-PR Deaths

Census Year	Raw Centenarian Count (Best Estimate in Parentheses)	DMF-PR Deaths At Ages 100-129	1,000 Q (Best Estimate in Parentheses)
1950	4,447 (2,300)	9	**
1960	10,369 (3,300)	65	**
1970	106,441 (4,800)	2,626	25 (547)
1980	32,194 (15,000)	7,303	227 (487)
1990	37,306 (28,000)	13,255	355 (473)

** DMF-PR death representation too fragmentary to permit computation.

Note: DMF-PR contains about 90% of total NDI deaths in 1979-1999. However, the representation of centenarian deaths is probably higher.

TABLE 14

Census Bureau Projections of Centenarian Population of United States

Source: A Centenarians in the United States@
 U.S. Census Bureau, July 1999

Year	Projected Centenarian Population (Low Series)	Projected Centenarian Population (Middle Series)	Projected Centenarian Population (High Series)
2000	69,000	72,000	81,000
2010	106,000	131,000	214,000
2020	135,000	214,000	515,000
2030	159,000	324,000	1,074,000
2040	174,000	447,000	1,902,000
2050	265,000	834,000	4,218,000

TABLE 15

Census Bureau Projections of Centenarian Prevalence
In the United State Population

Source: Middle Series Projections

Year	Total Projected U.S. Population	Total Projected U.S. Centenarian Population	Centenarian Rate Per Hundred Thousand General Population
2000	275,306,000	65,000	236.1
2010	299,862,000	129,000	430.2
2020	324,927,000	235,000	723.2
2030	351,070,000	381,000	1085.3
2040	377,350,000	551,000	1460.1
2050	403,687,000	1,095,000	2712.5